



JESUIT
SOCIAL
SERVICES

BUILDING A JUST SOCIETY

ANNUAL
REPORT
2010/2011





CONTENTS

Vision, Mission, Values	4
2010/2011 New initiatives	6
Message from the Chairman	8
Message from the CEO	10
Message from the Provincial	12
Strategic Directions 2008 - 2011	16
Research, Policy and Advocacy	17
Justice and Crime Prevention	18
Mental Health and Wellbeing	22
Settlement and Community Building	24
Education, Training and Employment	28
Fundraising	29
Volunteering	30
Governance	32
Financial summary	33
Funders and supporters	34
Contact details	35

VISION, MISSION, VALUES

Jesuit Social Services works to build a just society where all people can live to their full potential - by partnering with community to support those most in need and working to change policies, practices, ideas and values that perpetuate inequality, prejudice and exclusion.

OUR VISION

Building a Just Society

OUR MISSION

Standing in solidarity with those in need

Expressing a faith that promotes justice

OUR VALUES

Welcoming
forming strong, faithful relationships

Discerning
being strategic about how we can have the greatest impact


Courageous
standing up boldly to effect change

KEY FOCUS AREAS OF OUR SERVICE DELIVERY AND ADVOCACY:

We have developed expertise and provide services in the following focus areas working with people, families and communities to remove barriers to participation and inclusion:

- **Justice and crime prevention** – people involved with the justice system.
- **Mental health and wellbeing** – people with multiple and complex needs and those affected by suicide, trauma and complex bereavement
- **Settlement and community building** – recently arrived immigrants and refugees and disadvantaged communities.

Across all this activity we promote education, lifelong learning and capacity building with a focus on those people with barriers to sustainable education and employment.



Since 1977 we have been standing up for people's rights.

Today we continue to work in some of the most difficult and demanding areas of human service:

- criminal justice
- substance abuse
- mental illness
- homelessness
- suicide bereavement
- long-term unemployed
- entrenched social disadvantage, and
- refugees and new arrivals settlement.

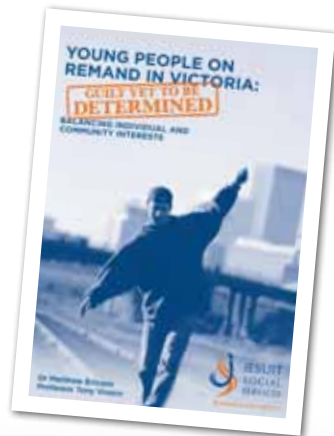
We work with people without supports who have had a history of abuse, neglect, trauma and isolation.

We look for the gaps.

2010/2011 NEW INITIATIVES

Remand reform: balancing individual and community interests

Victorian County Court Judge Frances Hogan launched 'Young People on Remand in Victoria: Balancing Individual and Community Interests' at the inaugural Brosnan Breakfast on 16th February 2011. This landmark report, by Dr. Matthew Ericson and Professor Tony Vinson, analyses current Australian and international trends in evidence-based prison policy in Australia and overseas. This includes a review of remand and its place within the criminal justice system. The report includes a statistical analysis of more than eleven thousand Victorian remandees incarcerated while awaiting trial between 2008 and 2010, with particular attention to the socio-economic background of remandees by age, gender and Indigenous status. The analysis highlights the accumulated disadvantage of young people involved in the criminal justice system, including high rates of unemployment and low levels of educational attainment. This report concludes with recommendations for remand reform that promote social inclusion and community safety, and the health and well-being of disadvantaged young people, families and communities.



Jesuit Community College

Jesuit Social Services proudly launched Jesuit Community College, a Registered Training Organisation and Learn Local organisation providing people with real skills for life, learning and work. Our goal is to help individuals, and by extension their families and communities, reach their full potential.

The College draws on the rich tradition of Jesuit education committed to 'care of the whole person' and development of active and informed citizens.

The Victorian Government approved funding of \$506,000 over two years to support the establishment of Jesuit Community College. The Minister for Higher Education and Skills, the Honourable Peter Hall MLC, announced the funding and launched the College on 23rd May 2011. The two-year grant, under the Youth Partnerships initiative, is linked to delivering targeted foundation skills training for people falling into three key groups – young people involved with the justice system; those struggling with mental health problems; public housing residents; and new arrivals/refugees – preparing them to move into further study in mainstream settings.

Just Leadership Breakfast series – Perth launch

On Thursday 31st March 2011, Jesuit Social Services, working with Bankwest and Western Power, launched the inaugural Perth Just Leadership Breakfast series.

The Perth series was launched following the success of the ongoing Just Leadership breakfast series in Melbourne.

The Just Leadership initiative is designed to develop the leadership capacity of individuals, organisations and communities in ways that contribute to building a more just and compassionate society.

Moving from the Edge: stories of achieving greater social inclusion

The Victorian Deputy Premier, the Honourable Rob Hulls MP, launched 'Moving from the Edge: stories of achieving greater social inclusion', authored by Professor Tony Vinson AM, on 22nd October 2010. In commissioning this research Jesuit Social Services sought to better understand the factors which assist excluded people to improve their inclusion in the life of the community. The following is an extract from Professor Tony Vinson's speech at the launch.

"Moving from the Edge is not a welfare tale of woe. It is a celebration of lives that have 'come good'. Individuals and families have spoken in a basically human way about their transition from being 'outsiders' to social 'insiders'. In the process we gain some important leads on different influences that have supported that journey."



Julie Edwards, the Honourable Rob Hulls MP, Professor Tony Vinson AM and Patricia Faulkner AO at the launch of 'Moving from the Edge'.



The Mount Druitt Community Enterprise Hub was established with the aid of a Federal Government Jobs Fund Grant of over \$1.1 million. It will address disadvantage and social vulnerability in one of Australia's most underprivileged urban communities.

The Store, as the Hub is locally known, has been recently redeveloped and will become a vibrant meeting place where community members access affordable food and clothing as well as a series of new training, work experience and employment opportunities. The Store also features a café, op-shop and monthly community markets.

For disadvantaged job seekers The Store operates as a 'living classroom' offering training programs for those with disabilities, mothers returning to the workforce and the long term unemployed. On completion of their training, participants may be offered paid work experience as a valuable stepping stone into mainstream employment.

Over the past 21 months, The Store has achieved significant milestones:

- Families have been assisted with affordable food on over 25,000 occasions;

'Moving from the Edge' is not a welfare tale of woe. It is a celebration of lives that have 'come good'.

Alice Springs

Jesuit Social Services established an office in Alice Springs in February 2011. This initiative is supported by philanthropic funding. Through local family and community meetings, this project will undertake a local assessment of needs, identify priorities and develop plans to address these. Opportunities to directly address 'closing the gap' will be identified. Community governance structures will be established and strengthened and areas for corporate, philanthropic and government engagement will be identified.

- 10 full and part-time employment positions have been created and sustained;
- 22 paid work experience/trainee positions have been created;
- 68 people have undertaken accredited Retail Certificate II training; and
- 13 volunteer positions have been created and sustained.

The Hub was awarded the School for Social Entrepreneurs 'Project Achievement Award' in 2010.



MESSAGE FROM THE CHAIRMAN



The 2010/11 year, our 34th year of operation, saw Jesuit Social Services establish a clear and unambiguous role in vocational education and training with the establishment of Jesuit Community College.

We see the development of pathways through vocational education and training to jobs as an excellent way to help those young adults who live at the margins of our society. We recognise however that this group needs new ways of working and extensive tailoring to their needs. We are grateful to the Victorian Government for their support in seeding Jesuit Community College's establishment.

Our work at Holy Family Social Services in Western Sydney is well established with a recent highlight being the refurbishment of 'The Store'. This supermarket provides both a 'living' classroom for locals to develop retail skills as well as providing a source of affordable and healthy food. The Store has been the recipient of substantial support from the Federal, State and Local governments, New South Wales businesses, as well as the local community. This help is greatly appreciated.

Our work in the justice system is the core of our organisation and has been the focus of our advocacy efforts throughout the year. We are seeking to ensure that the system of justice is both efficient and humane and respects the dignity of all people.

On behalf of the Board I would like to thank the Australian Jesuit Province, the CEO and the staff of Jesuit Social Services.

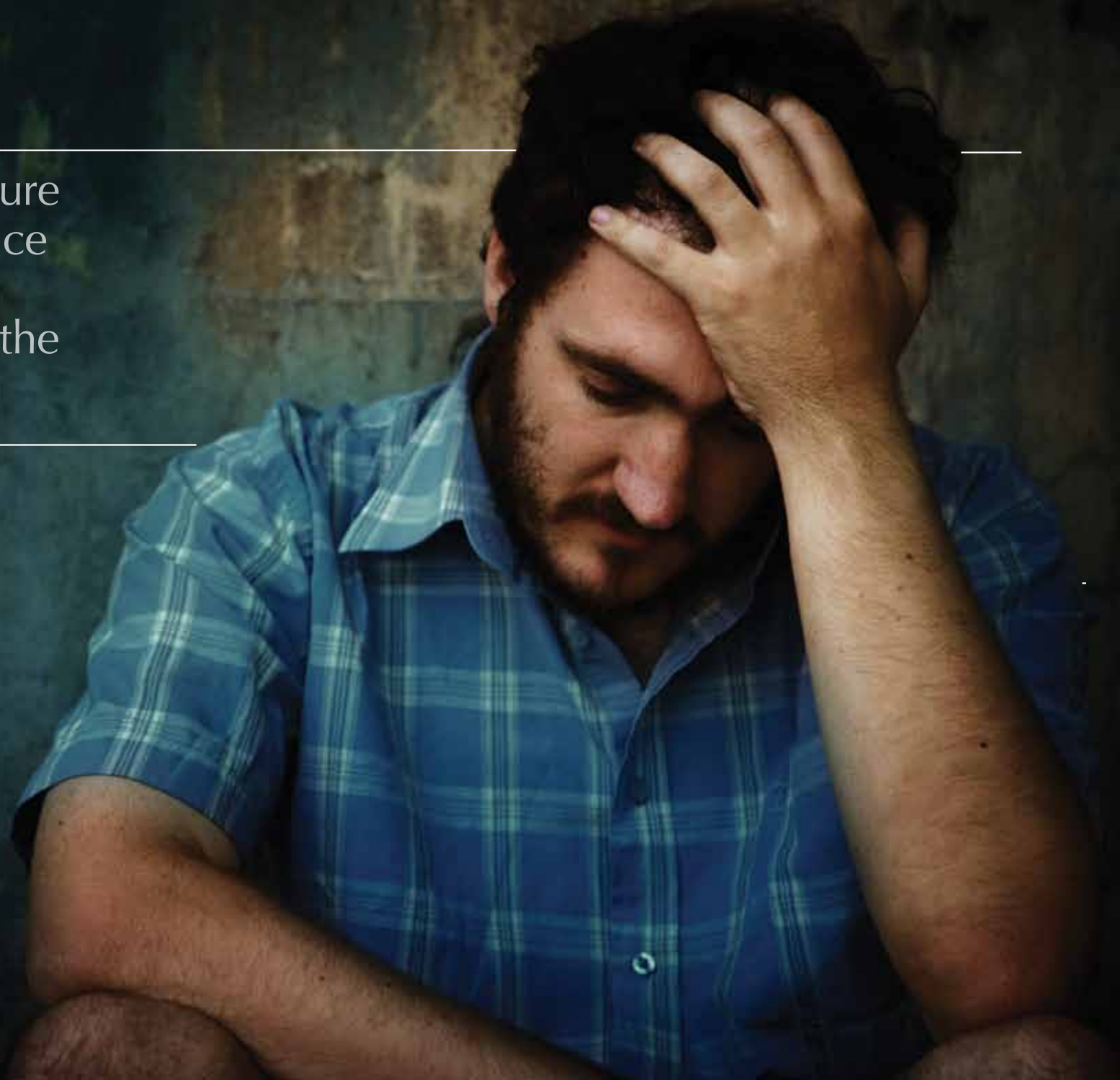
In addition, we could not survive without our funders, volunteers, supporters and donors.

I would also like to thank my fellow Board and sub-committee members who give generously of their time. Particular thanks go to Fr Frank Brennan SJ for his service on the Board from 2008 - 2011. Fr Brennan SJ will continue as a policy adviser and advocate for Jesuit Social Services.

Patricia Faulkner AO
Chairman of the Board



We are seeking to ensure
that the system of justice
is both efficient and
humane and respects the
dignity of all people.





MESSAGE FROM THE CEO



In 2007 when Jesuit Social Services celebrated its 30th anniversary, we took up the challenge put to us by the Provincial, Mark Raper SJ, to provide leadership in social justice across Australia on behalf of the Australian Jesuit Province. Our Strategic Plan 2008-2011 reflected our commitment to that goal.



The year 2010-2011 saw new initiatives in keeping with that commitment. Jesuit Social Services is committed to partnering with Aboriginal people and organisations as they seek to improve their circumstances and have greater control over their lives. After three years of working with Eastern and Central Arrernte people and the Alice Springs parish of Our Lady of the Sacred Heart, we established an office in Alice Springs in February 2011. This marks a significant milestone in Jesuit Social Services' history.



With the launch of Jesuit Community College, our dream to create education and training opportunities for disadvantaged people who have missed out on completing their education and who face barriers to participating in our community, came a step closer to reality. The College will bring the Jesuits' extensive expertise and experience in education to this group of people, creating pathways to greater inclusion.

The Just Leadership initiative has been established to develop the leadership capacity of individuals, organisations and communities across sectors, including business, government, and community. This flows from our desire to influence hearts and minds to build a just society. The Just Leadership initiative is possible thanks to a grant from donors who share this dream and believe in our capacity to build leadership across sectors for the greater good.

During 2010-2011 we began deliberating on our strategic directions for 2011-2014. Fundamental to our thinking and planning is our intent to influence hearts and minds to build a just society. We do this through our service delivery and focus on education and life-long learning; and by capacity building, advocacy and leadership development.

We were blessed to be accompanied, supported, challenged and loved in this by Ian Dillon SJ. Ian was our Chaplain for 15 years until his death on 2nd April 2011. Ian had the common touch. He believed in our staff and he believed in our work.

The story of the last judgement was close to Ian's heart – where God says to the people who reached out to those who were suffering, in prison, who thirst, "Come in, for when you did this to the least of your brothers and sisters, you did it to me".

Ian, like God, was concerned with people's actions – their behaviour towards those who thirst, are hungry, in prison, are excluded.

We are very grateful for Ian and his legacy which is now ours to cherish and hand on.

Julie Edwards

Julie Edwards
Chief Executive Officer





MESSAGE FROM THE PROVINCIAL



Five years ago we asked Jesuit Social Services to increase its leadership role in social justice across the Province.

I have been pleased to see this develop through expansion to Western Sydney and through the development of the Just Leadership program, Jesuit Volunteers Australia and Jesuit Community College. We are also working now in Alice Springs. This work has only been made possible through the support of a generous donor. We have been pleased to also be involved in the social ministry outreach of the Jesuits and other parts of our Asia Pacific region helping to build the capacity of our social ministries and contributing to work for the environment and the development of an ongoing strategy for work in ecology.

As a fellow Jesuit, I am especially mindful of the late Fr Ian Dillon and the unstinting service he gave to the community - especially to those who relied on his support in difficult circumstances.



Dearly loved by us all but especially by the staff at Jesuit Social Services, his availability and counsel was something very special. We are pleased that this will continue with Fr David Ryan's appointment as a member of the Jesuit Social Services team.

I commend Jesuit Social Services' ongoing commitment to helping shape a better tomorrow through its policies of advocacy, action and social inquiry. Well established structures within the ministry support these endeavours and are driven by people of outstanding talent.

We are very blessed with so many generous friends and supporters who want to share in our mission. We are blessed also with a great staff and volunteers who seek to live the Ignatian ideal of being 'contemplatives in action'. I am pleased to commend to you this report on their achievements in 2011. Thank you for all the ways you support the wonderful work of Jesuit Social Services in helping to build a just society.

Steve Curtin SJ
Provincial, Australian Jesuits

“I commend Jesuit Social Services’ ongoing commitment to helping shape that better tomorrow through its policies of advocacy, action and social inquiry.”

Steve Curtin SJ





Patricia Faulkner (AO) is Chairman of the Jesuit Social Services Board. Patricia also Chairs the Australian Social Inclusion Board. Patricia resigned as a Partner with KPMG (Australia) in December 2010. Patricia has held a diverse range of high level positions in government, including Secretary, Department of Human Services (Victoria) from 2000-07. Patricia is a Fellow of the Australian College of Health Services Executives, a National Fellow of IPAA and also served as a member of the federal Climate Change Committee. Appointed 2007.

Julian Slatterie SJ is a Jesuit priest and has had a distinguished career in Education as Deputy Headmaster of St Ignatius College Sydney, Headmaster Xavier College Burke Hall and Headmaster Xavier College, Kostka Hall. Fr Slatterie was formerly the Treasurer of the Society of Jesus in Australia. Appointed 1996.

Associate Professor Margarita Frederico is Head, Department of Social Work and Social Policy at La Trobe University. Her area of research is child wellbeing and child protection and human service organisations. Margarita is a past Director of Australian Association of Social Work

and recently represented the Australian National Heads of Social Work Schools Council in the development of guidelines and resources for child protection and child wellbeing content and accreditation standards in social work education programs. Appointed 2006.

Frank Brennan SJ is a Jesuit priest, an adjunct fellow in the Research School of Pacific and Asian Studies at the ANU, Professor of Law in the Institute of Legal Studies at the Australian Catholic University, and Professor of Human Rights and Social Justice at the University of Notre Dame Australia. In February 2010 Frank was appointed Catholic Advocate in Residence for the St Vincent de Paul Society, Catholic Health Australia (CHA), Catholic Social Services Australia (CSSA), and the Australian Catholic University's Public Policy Institute (PPI). Appointed 2007, resigned 2011.

Jennifer McAuley is the Department of Human Services Representative on the Youth Parole Board. Jennifer is a qualified social worker and has had wide-ranging experience across Australia, including in Victoria with the Department of Human Services. Her most recent role was as the Assistant Director, Child Protection and Juvenile Justice. Appointed 2007.

Brian McCoy SJ is a Jesuit priest and is also NHMRC Fellow for Aboriginal and Torres Strait Islander Health Research at the Australian Research Centre in Sex, Health and Society (ARCSHS) at La Trobe University. Brian was a research officer with the Royal Commission into Aboriginal Deaths in Custody (Pat Dodson's Underlying Issues Unit). In 2004, Brian was appointed an Honorary Fellow within the Faculty of Medicine, Dentistry and Health Sciences, located within the Centre for Health and Society. Appointed 2007.

Libby Rogerson IBVM is a Loreto sister currently working as Executive Officer for Mary Ward International Australia - the Loreto Sisters aid and development agency which funds projects in Australia and overseas, supports volunteers and is involved in development education. Libby was formerly working as the Coordinator of Social Justice and Director of Caritas, in the Diocese of Parramatta, NSW. Libby has worked in a number of schools across Australia, also as Dean of St Mary's College, University of Melbourne and chaplain to Murdoch University, Western Australia. Appointed 2006.

David Sutton has degrees in Education and Theology and a Masters in Counselling and Human Services. He has lived and worked in diverse settings including 10 years at Corpus Christi Community Greenvale, for men with a background of homelessness and 3 years at Nauiyu, an aboriginal community in the Northern Territory. David is currently working as a counsellor at St Bernards' College, Essendon. Appointed 2009.

Bernie Szentirmay is a Partner at KPMG (Australia). Bernie has 20 years experience in providing audit, advisory and risk management services to public and private entities across a broad range of industries. Bernie also provides professional services to a number of not-for-profit entities operating in the medical research and philanthropic sectors. Appointed 2009.

Shane Healy is the General Manager of 3AW / Magic 693 Radio. He has 20 years broadcasting experience in management and leadership roles with a broad range of responsibilities ranging from budgeting and financial management, marketing and strategic planning to legal and human resources issues. Appointed 2009.

Darren Walls is General Manager of IceHouse. He has extensive experience in sales and marketing in both the commercial and not for profit sectors. Appointed 2006, resigned February 2011.

Committee membership

Board	Risk and Finance Committee	Property Committee	National Strategic Planning Committee	Governance Committee	Policy Committee	Fundraising Committee	One Foot Raised Sub Committee
Patricia Faulkner, AO (c)			✓	✓			
Julian Slatterie SJ	✓	✓					
Margarita Frederico			✓	✓	✓		
Frank Brennan SJ					✓		
Jennifer McAuley			✓				
Brian McCoy SJ*							
Libby Rogerson IBVM							
David Sutton			✓		✓		
Bernie Szentirmay	✓	✓					
Shane Healy						✓	✓
Darren Walls						✓	✓

*Applied for a leave of absence under clause 3.15 of the Corporate Governance Practices.



STRATEGIC DIRECTIONS 2008 - 2011

1 Build a social research/policy/advocacy unit of national standing

2 Provide leadership in social justice across the Australian Jesuit Province

3 Strengthen our service delivery on a national basis

4 Respond to service gaps and emerging needs

5 Strengthen our culture, infrastructure & support base.

Jesuit Social Services 2008-2011 Strategic Plan provided a three-year framework to strengthen our cultural heritage and lived values and ensure sustainability into the future, thereby ensuring Jesuit Social Services could take up its leadership role for social justice in the Province. The strategic directions were identified as enabling Jesuit Social Services to be an effective force for social justice in Australia.



RESEARCH, POLICY AND ADVOCACY

The Policy Unit complements the organisation's range of community service programs. It identifies models of good practice, service gaps and emerging trends and policy issues thereby allowing the organisation to advocate for change in keeping with our vision of 'building a just society'.

We strive to influence the hearts and minds of people through a variety of means.

The Unit's research and policy papers provide a solid basis from which the organisation advocates strongly to governments and the broader community for appropriate policies, legislation and funded programs to improve the lives of disadvantaged people, families and communities.

This year, a strong focus has been on law and order issues. The new Victorian State Government started implementing significant changes in the justice system, including the abolition of suspended sentences and home detention, and planning for the introduction of minimum statutory sentences and review of the Adult Parole Board.

We have been advocating in direct meetings with government, other key stakeholders and through the media for policies that are based on sound evidence and for funding to be directed away from imprisoning more people to crime prevention and diversionary programs.

In addition to the law and order area, we have been advocating in the areas of mental health, substance abuse, intellectual disability and Aboriginal affairs.

We have made numerous submissions over the year to various bodies including:

- Victorian Government's Protecting Vulnerable Children Inquiry
- Sentencing Advisory Council's Inquiry into the Introduction of Statutory Minimum Sentencing
- Senate's Inquiry into Australia's Immigration Detention Network
- Review of Northern Territory Youth Justice System
- Victorian Government's Review of the Human Rights Charter
- Victorian Parliament's Drug and Crime Prevention Committee's Inquiry into Security and Violence in Hospitals
- Victorian Parliament's Law Reform Committee's Inquiry into Access to Justice System by People with an Intellectual Disability
- Sentencing Advisory Council's Review of the Adult Parole Board.

Our policy submissions and media releases are routinely loaded on to our website. Hard copies can be provided upon request.



Program reports

JUSTICE AND CRIME PREVENTION

BROSNAN YOUTH SERVICES

Brosnan Youth Services is a holistic support service for people exiting adult prisons and/or Youth Justice centres, who are assessed as high risk/need, limited social and family networks, limited accommodation and post release support options and who have multiple and complex health problems.

Brosnan staff deliver quality programs in a manner that reflects the social justice principles of participation, equity, access and respect. Services include: intensive outreach support, case management, supported accommodation, drug and alcohol counselling, recreation programs, employment/training programs, 24/7 after hours emergency assistance and duty work and referral service.

Youth Justice Community Support Services

The Youth Justice Community Support Program is an intensive support program for young people aged 10-21 engaged with the justice system. The program is grounded in strong theory and evidenced based practice. It focuses on broad imperatives in a young person's life such as social and economic inclusion, health and wellbeing, culture, gender, developmental needs and the individual's dreams and aspirations. By addressing these imperatives we seek to facilitate outcomes in each of these areas such as: social and economic participation and connectedness, strong sense of self identity, resilience, wellness and self determination. Such outcomes equip young people with the skills and knowledge to make informed choices regarding their future and the means to participate more fully in their community.

Young people assisted:	231
Visits to youth justice centres:	180
Young people engaged in employment:	48
Young people engaged in training:	60

Community Justice Group Conferencing

The Youth Justice Group Conferencing program is based on restorative justice principles that: encourages young people to take responsibility for their offending behaviour; enhance the rights of victims; provide the young person with an opportunity to make amends to the victim and community; provide a voice for everyone who is involved and affected by an offence; strengthen support relationships for the young person and help prevent further offending; involve those most interested and affected by the offending in the decision making process and enhance their satisfaction with the criminal justice process; provide culturally appropriate intervention; and develop an outcome plan that supports all of these objectives and aims. Group Conferencing encourages dialogue in a controlled and structured way between individuals who have offended, their victims and the wider community.

Referrals progressing to conference:	83%
Number of conferences:	64
Conferences with victim participation:	64%
Percentage of outcome plans actioned:	85%

Link Out

The Link Out Program provides pre-release assessment and planning, intensive support and case management for men exiting the Victorian prison system. Support is holistic and is provided predominantly on an outreach basis.

This program is delivered by a consortium of the following organisations: Jesuit Social Services, ACSO and VACRO.

The program works with men at 'medium to high risk' of re-offending. In Link Out, Brosnan Youth Services works with men in the 18-25 year age group. Participation is voluntary.

Number of people assisted:	163
Number of new referrals:	115

WISP - Women's Intensive Support Program

WISP provides pre-release assessment and planning, intensive support and case management for at least 90 women prisoners per year.

Number of young people assisted:	29
Number of new referrals:	16

Konnect

The program provides pre-release assessment and planning, and post release support to Aboriginal men and women. Support is based on holistic, culturally competent best practice and is provided predominantly on an outreach basis with a community focus. The program also aims to build the capacity of mainstream organisations through strong links to Aboriginal organisations to better meet the needs of Aboriginal men and women exiting prisons. Participants work with case managers from the program pre and post release, with support in the community for up to 12 months.

Number of people assisted:	128
Number of new referrals:	92

Perry House

Perry House is a living skills residential program for young people with intellectual disabilities who are involved with the criminal or youth justice systems. Perry House workers facilitate the development of independent living skills from a strength based practice approach which promotes resilience and a 'can do' approach to life. Our participants receive a comprehensive living skills assessment and then participate in the development of a 12 month program plan which is monitored throughout their stay.

Start Over

The Start Over program is a voluntary support service for young people aged 10-18, and their families, who have had contact with Victoria Police.

The Start Over model is a crime prevention initiative which includes assessment and referral to support services for at-risk young people referred by police.

Providing holistic case management support to young people and their families, the Start Over program enhances the responses of the police and other services by trialling new ways of responding to young people at risk.

Start Over also focuses on community development activities and collaborates with other youth and community services in the City of Whittlesea. Funding for Start Over ceased on 30th June 2010.

Just Start

Just Start works closely with employers and young people seeking work. Through these partnerships Just Start is able to understand and respond to the individual needs of both the employers and the recruits.

At Just Start we concentrate on the capability and potential of young people and work with them to aid their personal growth and development. Our aim is to ensure they are prepared to be a productive and reliable employee in their workplace.

Leaving Care Mentoring

The Leaving Care Mentoring program is aimed at providing extended community support to young people in the child protection system who reside in residential or home based care and who are soon to be transitioning to independent living. This is done through matching volunteers from the community who have been trained in mentoring, with one of our young people for 12 to 18 months - with the aim that the mentor and young person develop a relationship that will continue after the program so that the mentor can be a consistent and stable role model in the young person's life.

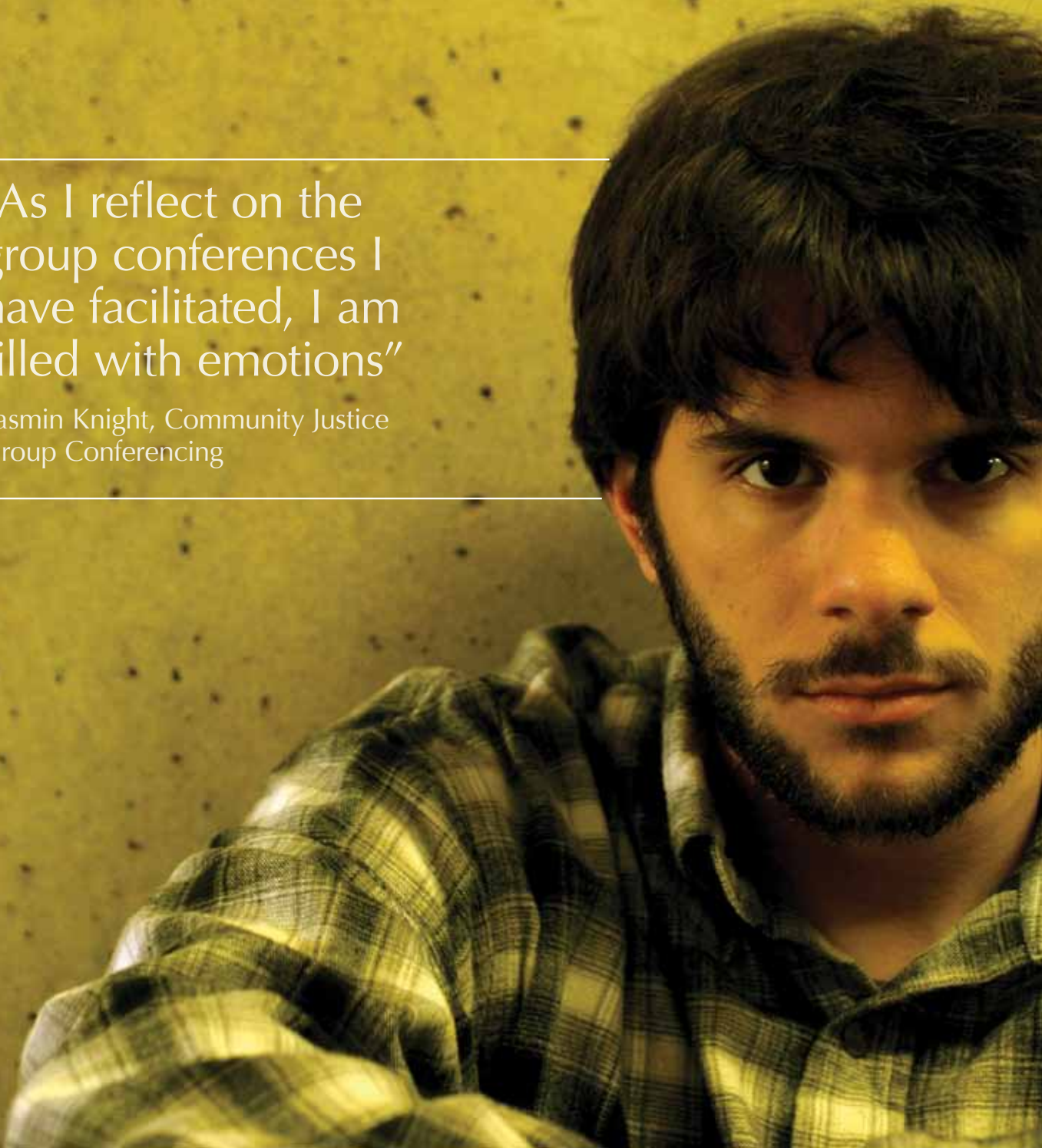
Number of new referrals:	16
Young people in the program:	30
Young people matched to mentors:	24

L2P

The L2P program is a state wide initiative of by VicRoads. It is aimed at assisting young learner drivers who are facing significant barriers to getting the 120 mandatory hours of on the road driving experience. The learner drivers are matched with a volunteer supervising driver from the community who works with them to achieve their goal of 120 hours. The young person's disadvantage may arise through a variety of conditions such as lack of access to a vehicle and family support, homelessness or economic disadvantage. The community is encouraged to support young people who face these barriers and who require their driving licence to secure employment and access to training. The L2P program engaged volunteer licensed and trained drivers from the community to provide supervision for young drivers referred to the program through local community agencies. The program enables young people to have professional driving lessons in the first place and then be matched to a supervising driver.

“As I reflect on the group conferences I have facilitated, I am filled with emotions”

Yasmin Knight, Community Justice Group Conferencing



MENTAL HEALTH AND WELLBEING

Connexions

Connexions aims to improve the lives of young people, aged 16 – 28 years, experiencing mental health and drug and alcohol problems.

Connexions endeavours to bring about change in the health services system by identifying existing gaps and by pointing to a better way of responding to the multiple needs of alienated young people. Jesuit Social Services continues to advocate for an integrated model of service delivery that is compassionate, flexible, skilled and timely.

The program engages young people in relationships of trust and understanding - providing intensive outreach and support, counselling, suicide prevention, drug and alcohol interventions for young people and clinical consultancy to other workers in the field.

Program participants:	39
Outreach participants:	20
Counselling participants:	19
Average age:	24-25

Artful Dodgers Studios

The Artful Dodgers Studios provide innovative and creative spaces for participants to work in fully equipped art and music studios with experienced artists and musicians. Explore and develop their creative skills and get involved in projects, exhibitions and public outcome events.

The program is for young people aged 17 – 28 who experience marginalization due to a range of risk factors. These include substance misuse, mental illness, homelessness, involvement with the youth justice system, unemployment and other risk factors that the young person identifies as causing disadvantage or social exclusion.



Number of referrals:	113
Male:	83%
Female:	17%
Average age:	20.6
Participants with a history of substance use:	73%
Participants with mental health problems:	64%
Participants who have been involved in the justice system:	49%
Participants with a dual diagnosis (substance use and mental health problems):	52%
Participants who completed accredited training through Artful Dodgers Studios:	12
Participants who engaged in employment:	19

The Outdoor Experience



Since 1985, The Outdoor Experience (TOE) has been offering a range of outdoor adventure intervention programs for young people aged 15 - 25 years.

TOE's bush adventure therapy program takes small groups of young people on extended wilderness journeys and ventures to some of the most remote places in Victoria.

This core of TOE program is for young people who have, or have had, problems with alcohol and/or substance use. This program provides numerous and significant opportunities for participants to develop healthy relationships with self, others and the environment.

TOE also provides community adventure programs which are tailored to meet the particular needs of young people engaged with other organisations. TOE develops the tailored program in collaboration with community agencies, focusing on adventure, healthy living and the outdoors. Programs may involve bushwalking, rock climbing, rafting, canoeing, caving, or cross country skiing.

Number of participants:	86
Male:	64
Female:	22
Aged under 20 years:	34
Aged over 20 years:	52

Cultural background: Australian 43%, Karen 9%, Aboriginal 5%, Samoan 3%, Cook Islander/Maori 3%, Other 37%

Strong Bonds

The Strong Bonds project was developed in response to a need in the youth work field for a better understanding of the dynamics between young people with complex needs and their extended family. The project also looks at ways that this knowledge can be better used in practice.

The Strong Bonds project:

- provides workers in the youth field with training and resources to assist them to implement 'family aware' youth work practice in their work with young people with complex needs; and
- provides easy-to-use resources which support families of young people with complex needs.

Pathways Support

The Pathways Support Workers are the initial contact point for the Artful Dodgers Studios. The Pathways Team works with young people engaged with the Artful Dodgers Studios to assist them to identify pathways into education, training and employment opportunities. The program also provides support related to health and wellbeing problems.

Support After Suicide

Support After Suicide aims to increase the availability of timely and appropriate support to anyone who has had someone die by suicide. Support After Suicide staff do this by both providing support to individuals, families and children who are bereaved by suicide and by building the capacity of education, health and welfare professionals who have the opportunity to support those affected by suicide.

Counselling program participants:	251
Education/information sessions:	11
Participants in education/information sessions:	153
Number of support groups held:	6
Total number of participants in groups:	76

SETTLEMENT AND COMMUNITY BUILDING

Vietnamese Welfare Resource Centre

The Vietnamese Welfare Resource Centre is based in the high-rise housing estate at Flemington and has been responding to the settlement and support needs of the Vietnamese community in North and West Melbourne for over 18 years. Services offered by the Vietnamese Welfare Resource Centre include the provision of information and referral, counselling and crisis accommodation, community groups for young people, families and the aged, and the fostering of community and cultural activities such as forums, classes, information sessions, training programs and festivals.

The Vietnamese Welfare Resource Centre has recently opened an outreach service in St Albans, and continues to work with both local residents and service workers - including council staff, health workers, police, teachers and Centrelink personnel - to promote cross cultural awareness and understanding.

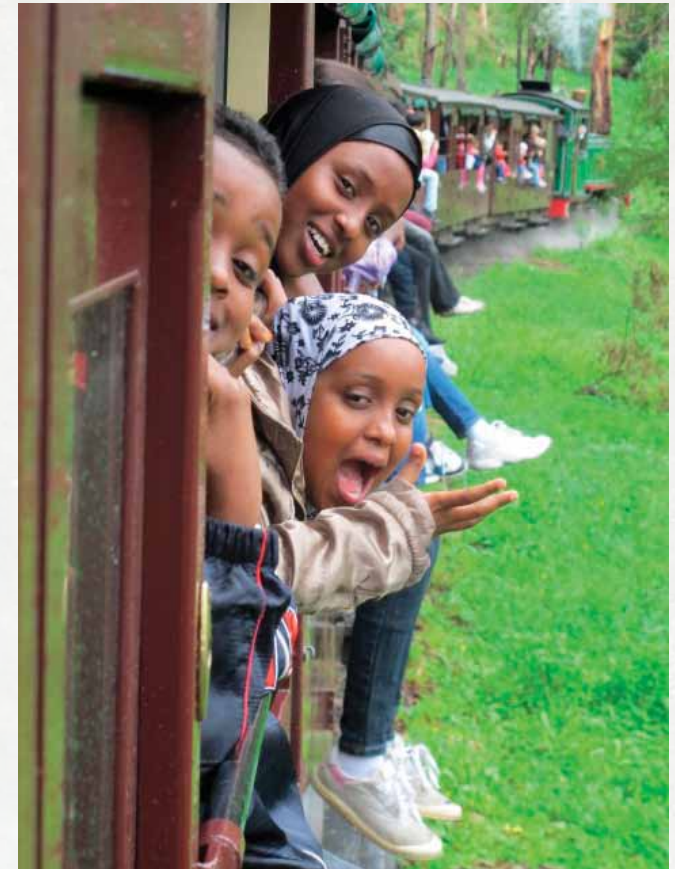
African Program

Jesuit Social Services' African program provides peer support and mentoring to children and young people from various African communities living in public housing in Flemington, St Albans and nearby suburbs. The program works in partnership with African community organisations to strengthen newly arrived communities.

Specific activities include referral, information sessions, mentoring of organisations, a twice weekly Homework Club, sporting and recreation activities, family liaison, and facilitating community events such as Eid Festival.

Integration of Africans will be achieved through fostering their participation in sporting clubs, in schools, and as volunteers and committee members in local whole of community events.

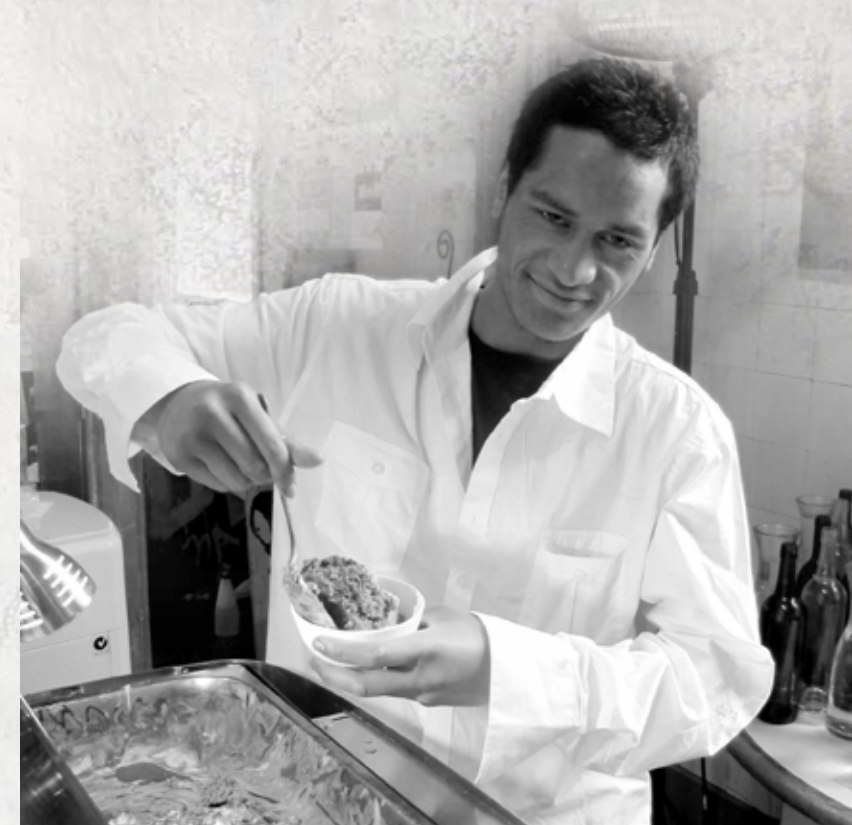
Youth workers with Somali, Eritrean, Sudanese and Arabic backgrounds supported by an experienced community development worker provide family inclusive services to young men and women who are newcomers, and communities which require assistance to develop their capacity to organise and advocate.



Activity	Total Participation	
	Vietnamese SGP*	African Youth SGP
Clients	596	92
Casework Services	572	93
Referrals to other services	1564	289

Top issues:	Vietnamese SGP*	African Youth SGP
Citizenship	36%	
Document Help	35%	
Accommodation	24%	
Migration assistance	23%	
Family and Relationships	19%	
Education and Training		42%
Life skills		28%
Employment		27%
Driving		18%
Legal		17%
Group sessions: information and activities	94	11
Attendance at group sessions by SGP eligible clients	1036	319
Homework Club (weekly)		97
Prep – Yr 6		45
Yr 7 – Yr 10		37
VCE/VCAL		15
Ethnicity	100%	Other 28%, Somali 23%, Sudanese 19%, unknown 16%, Eritrean 8%, Ethiopia 6%

*Eligibility for SGP funded services is to help those people who are newly arrived to Australia settle in the first five years. Ongoing support is provided to Vietnamese people beyond the first five years due to the extensive Vietnamese volunteer base which provides activities such as community events at the Vietnamese Welfare Resource Centre. Many people also continue to attend the program group information and activity sessions but are not counted in the statistics.



Western Sydney Holy Family Social Services

As a partnership between Holy Family Parish Mount Druitt and Jesuit Social Services, Holy Family Social Services has been working in Western Sydney since 2008. An expanding range of projects is being developed in order to offer genuine opportunities to local community members, especially in the areas of training and employment.

The staff at Holy Family Social Services are excited about the development of new projects and social enterprises which offer affordable food and clothes, job opportunities and experience in retail for members of the Mount Druitt community. Responding to needs identified in the community, Holy Family Social Services offers holiday programs, social enterprises, training courses, exercise classes and projects to address social isolation. The team's aim is to generate hope and opportunity in one of Australia's most disadvantaged urban communities.

Instances of assistance with affordable food and clothing:	19,992
Participants in family holiday program:	810
Participants who completed accredited retail training:	33
Participants in the school mentoring program:	24

Alice Springs

Jesuit Social Services is working with local Alice Springs communities to support Eastern and Central Arrernte people to improve their situation and to have more control over their lives.

This new project is based on community development principles and works at the family group level. We are committed to:

- embrace the importance of culture, family and sovereignty
- embrace the centrality of strong, respectful relationships and reciprocity in partnerships
- build on the strengths of Indigenous people, families and communities
- follow sound sustainable community development principles

Through local family and community meetings, this project undertakes local assessments of needs, identify priorities and develop plans to address these. Opportunities to directly address 'closing the gap' have been identified and responded to. Community governance structures are being established and strengthened and areas for corporate, philanthropic and government engagement identified.

Collingwood Community Information Centre

The Collingwood Community Information Centre provides a welcoming space and a high quality information and referral service staffed by public housing residents and a team of trained volunteers from the neighbourhood.

The Collingwood Community Information Centre's services are as follows:

- Self-directed access – drop-in services (photocopier, fax, computers, refreshments); tax help.
- Information provision – community information.
- Advocacy – complex cases; networking; partnerships.
- Capacity building via training and mentoring – Collingwood Community Information Centre volunteer program; informal outreach; English help program; student placements.
- Enhancing connection and engagement – drop-in services; welcome lunches, meeting rooms, office infrastructure for local groups; activity information.

Total participant visits:	8,809
Total information requests:	10,411
Total number of service users:	8,450
Number of new service users:	784

Participants:

Aged under 18:	1,252
Culturally/linguistically diverse:	6,209
With ATSI background:	1,643

“For sure I am a
better person...”

Joel, Artful Dodgers Studio



EDUCATION, TRAINING AND EMPLOYMENT

African Australian Inclusion Program

The African Australian Inclusion Program (AAIP) is a professional bridging and training program for qualified African-Australians, providing six months paid workplace experience at NAB. Piloted in 2009, the program continues to grow in strength. AAIP is a joint initiative of Jesuit Social Services and NAB in collaboration with Adult Multicultural Education Services (AMES). The need for the program was identified by the African-Australian community who noted that lack of local experience in the Australian business sector was a significant barrier to employment for qualified African-Australians. The joint response of the collaborating organisations has been well documented and the program has received a number of awards.

The program aims to provide commercial experience and learning opportunities for participants, plus enhance their business networks. All participants are provided with a NAB workplace coach and mentor throughout their placement. Participants are also provided with comprehensive job search support including interview techniques and resume writing during the later part of their work placement.

Just Leadership

Just Leadership is a program of Jesuit Social Services designed to develop the leadership capacity of individuals, organisations and communities in ways that contribute to building a more just and compassionate society.



The purpose of Just Leadership is to:

- Foster the development of social leaders within and across business, government and community, encouraging leaders to take action that will contribute to building a society that is more just - socially, environmentally and intergenerationally.
- Build stronger connectivity between organisations and their people, developing work cultures and relationships that nurture both performance and meaning.
- Build stronger connectivity between organisations and their communities, through enterprising leadership strategies that enhance social innovation and inclusion.
- Be heard as an authentic voice, engaging and inspiring organisations, their people and the community in collaboration for a more just and compassionate world.

Jesuit Community College



Sue Olney, Julie Edwards, and Patricia Faulkner AO with the Honourable Peter Hall MLC, Minister for Higher Education and Skills at the launch of Jesuit Community College on 23rd May 2011.

Jesuit Community College is a Registered Training Organisation and Learn Local organisation providing people over the age of compulsory education with real skills for life, learning and work. The College helps individuals who face barriers to mainstream education to reach their full potential and, by extension, their families and communities.

Jesuit Community College draws on the rich tradition of Jesuit education committed to 'care of the whole person' and development of active and informed citizens.

Jesuit Community College offers nationally recognised qualifications in general education for adults, volunteering, visual arts and contemporary craft and creative industries, as well as short courses and pre-vocational programs. Our training is government funded for eligible learners.

Jesuit Community College also offers training in a range of locations and tailors training to suit different groups of learners. We also prepare and help learners to access training offered by other providers, including TAFE.

FUNDRAISING

Throughout 2010-2011, we have been moved by the generous support of individuals, workplaces, schools and groups. Our capacity to operate and reach out to those in need is dependent on this support, with every donation making a real difference to those most in need.

Newsletter appeals / general donations

The strong response to our quarterly newsletter appeals has continued in 2010-2011 with \$220,067 received in generous donations.

Community Partners

Community Partners are committed monthly donors who provide us with regular monthly income. Through their generosity, \$66,840 was received this financial year.

WorkPlace Giving

WorkPlace Giving is a convenient form of giving, through regular employee salary deductions and corporate matching (made available by some employers). \$8,970 was raised through WorkPlace Giving this financial year.

Bequests

Each of us possesses an extraordinary gift – the power to help others. Leaving a bequest or legacy to Jesuit Social Services helps build a better tomorrow for those suffering extreme disadvantage. We encourage you to consider making a bequest to Jesuit Social Services in your Will. This generosity will allow Jesuit Social Services to keep responding to the unmet needs of young people, families and communities. Jesuit Social Services can use such funds to expand our work into new areas, improve the access to our current services and build the capacity of the organisation to continue our work.

One Foot Raised Development Fund

The One Foot Raised Development Fund, launched in March 2010 enables us to:

- Build our capacity to investigate, develop and launch new programs in response to unmet and emerging needs.
- Strengthen our research, policy and advocacy work to change policies, practices, ideas and values that perpetuate inequality, prejudice and exclusion.
- Give us the freedom to discern where we can have the greatest impact and the independence to exercise leadership for social change.

Throughout this financial year, \$102,889.96 was raised for the One Foot Raised Development Fund.

MAJOR FUNDRAISING EVENTS

Annual Dinner



The Annual Fundraising Dinner was held on 30th April 2011 at the Sofitel on Collins. Frank Brennan SJ delivered the Frank Costigan QC Address to over 450 guests. A moving DVD featuring eleven program participants across Jesuit Social Services programs provided an insight into the very personal impact of Jesuit Social Services' work on people's lives. Guests were also treated to an enjoyable evening of music and dancing.

Just Cycle Yarra Valley

Just Cycle Yarra Valley took place on 20th March 2011 at scenic Rochford Winery in excellent weather conditions. The event featured: a family friendly 12km recreational ride; a 65km endurance ride through the Yarra Valley; and a 120km challenge featuring the Mount Donna Buang climb. Upon completion, riders and families were treated to live entertainment, activities, gourmet food and wine tasting.



Former Victorian Premier, Steve Bracks, pictured with rappers, The Flybz, took on Mount Donna Buang at Just Cycle Yarra Valley.



VOLUNTEERING

Events

More than 70 volunteers provided support for our fundraising events including Just Cycle Yarra Valley in March and the Annual Fundraising Dinner in April. The wonderful support of these volunteers is invaluable to us in running our events.

NAB Community Partner

NAB volunteers have been active in supporting a number of volunteering activities over the year. An enthusiastic team of more than 15 NAB volunteers helped prepare and serve a wonderful Christmas dinner at Brosnan Centre. Over 220 family members from the Horn of Africa communities living on the public housing estate in Flemington and St Albans were treated to all day school holiday excursions to Healesville, Werribee Zoo and Puffing Billy. NAB funded and arranged the excursions, with over 60 NAB staff attending the excursions with the community.

African Program

The African Program Homework Club is strongly supported by a dedicated and enthusiastic group of around 50 volunteer tutors. Volunteers assist primary and secondary school children with their reading and writing as well as their homework.

Collingwood Community Information Centre

Collingwood Community Information Centre involves a small group of volunteers who offer highly valued assistance in the delivery of information and services provided to the local community.

Jesuit Volunteers Australia

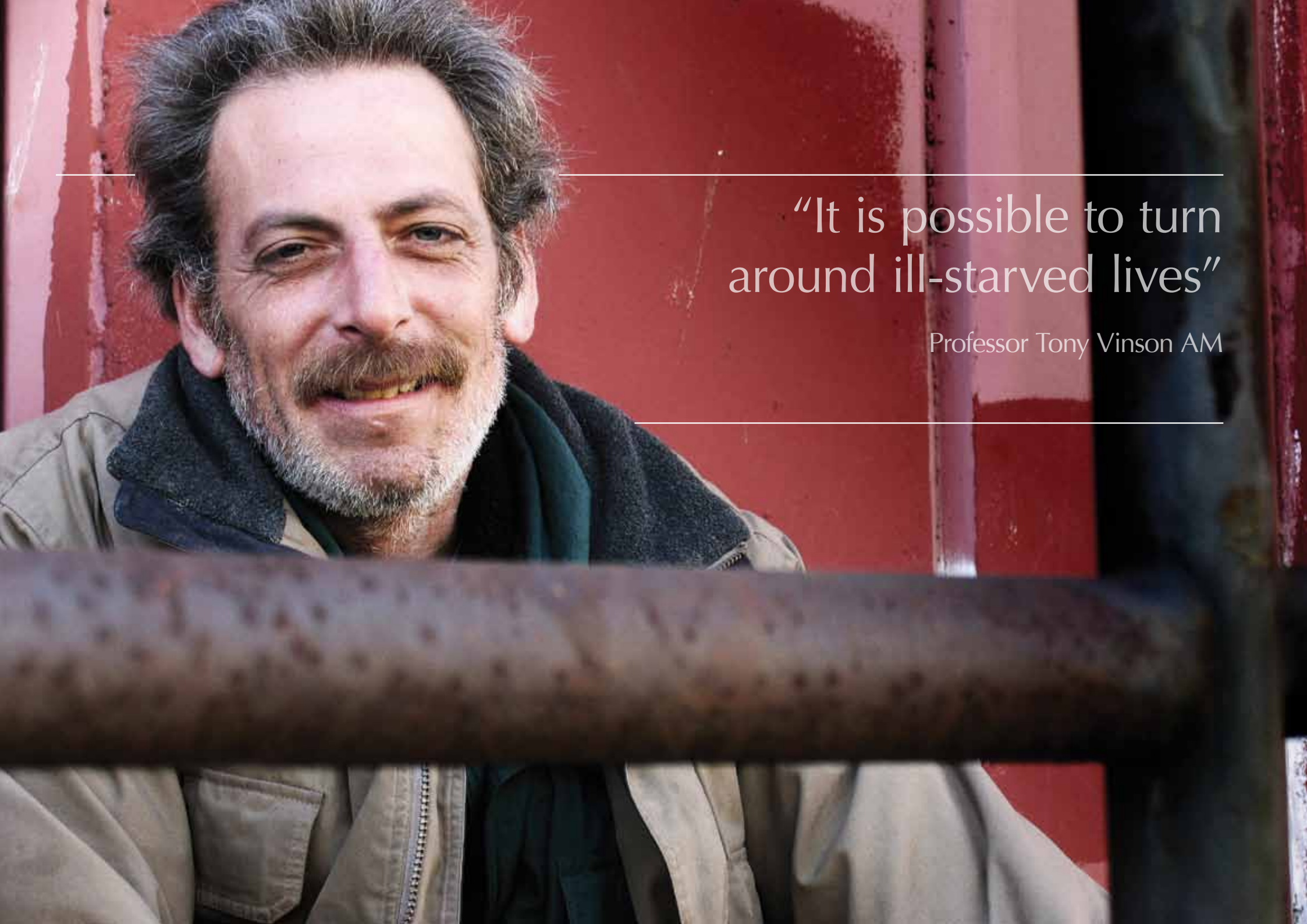
Jesuit Volunteers Australia is an Australia wide program which offers those who volunteer an opportunity to explore the way in which the volunteer experience involves a dynamic interaction between the self and the world. Through reflection it becomes clear that the experience of volunteering changes the roles of giver and receiver, and encourages new thinking about oneself and about the world at large. Reflection offers volunteers the opportunity to step away from doing and thus focus on how they are being changed, challenged, inspired or renewed.

Volunteers within Jesuit Social Services as well as those who volunteer in other organisations are offered reflection in a range of settings in Melbourne, Sydney and Perth.

In 2011 Jesuit Volunteers has also been engaged in the education sector with undergraduate students at University of Melbourne who are studying Community Volunteering for Change, offering an understanding of the value of reflective practice as an integral part of their volunteer internships.

Program support

We are grateful to all our volunteers who have supported us through the year by helping in various roles in more than eight locations. Some of the roles performed by volunteers include reception, administration support, tutoring, cooking, membership on Board and committees and professional and skilled services. We appreciate the commitment of our volunteers and the way they continue to share their time and skills to help make a difference to the lives of others.

A portrait of Professor Tony Vinson AM, a middle-aged man with grey hair and a beard, smiling slightly. He is wearing a light-colored jacket over a dark scarf. The background is a red wall with vertical lines. A thick, dark horizontal bar is in the foreground, partially obscuring the bottom of the image.

“It is possible to turn
around ill-starved lives”

Professor Tony Vinson AM



GOVERNANCE

Jesuit Social Services Ltd is a work of the Australian Jesuit Province, operating under an independent Board of Directors as an incorporated organisation. All Directors have a strong commitment to social justice and to 'building a just society'.

At time of writing, there are currently nine non-executive members on the Jesuit Social Services Board – the Chairman, three Provincial Appointees and five independent Directors.

The Directors receive no remuneration for their role on the Board and accept full responsibility for the governance of the organisation, in accordance with the Australian Corporations Law and community standards.

The Board has adopted a formal Governance Charter and good corporate governance is a fundamental part of the culture and business practices of Jesuit Social Services.

The Board sets the strategic direction and oversees the performance of the organisation with the support of the National Strategic Planning Committee, Governance Committee, Risk and Finance Committee, Fundraising Committee and Policy Committee.

An individual Director will not participate in decision making processes if any potential conflict of interest is likely to arise. The composition of

the Board of Directors and the performance of the Board are reviewed regularly to ensure that the Board has the appropriate mix of skills and experience and is operating in an effective manner.

New Directors receive an induction into the organisation and Directors participate in an ongoing development program concerning their role, responsibilities, our Ignatian heritage and the work of Jesuit Social Services. The Board supports open and transparent communication with stakeholders while regarding the confidentiality of client information as critical.

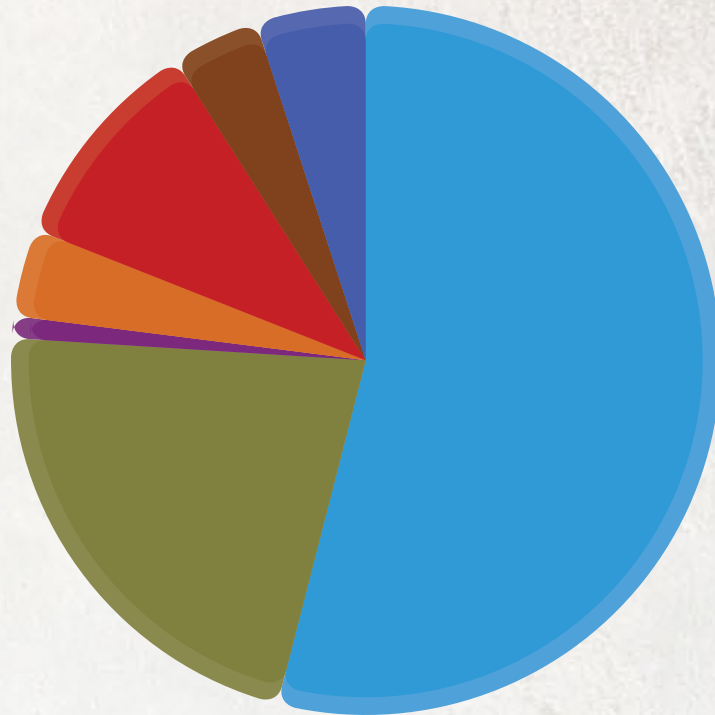
Our legal status is defined as:

- A company limited by Guarantee;
- A Registered Charity holding an Endorsement for Charity Tax;
- Deductible Gift Recipient (DGR);
- Concessions and Public Benevolent Institution (PBI) status, allowing tax deductions for donations; and
- Fringe Benefit Tax (FBT) exempt.

A full set of our financial accounts is available free of charge from Central Office. Please contact (03) 9427 7388 or jss@jss.org.au to obtain a copy.

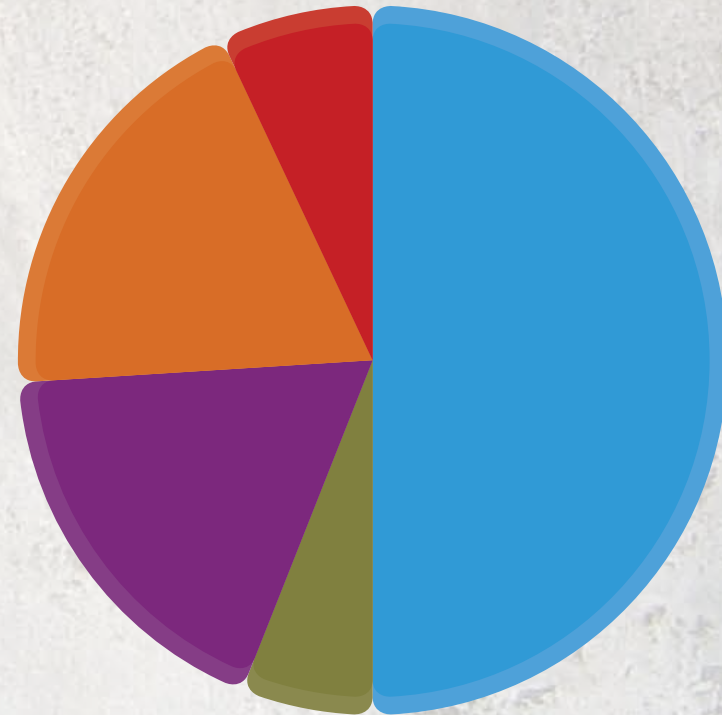
FINANCIAL SUMMARY

Sources of revenue 2010/2011



■	State Government Grants	54%
■	Federal Government Grants	22%
■	Local Government Grants.	1%
■	Australian Jesuits	4%
■	Jesuit Social Services Generated Income	10%
■	Public Donations	4%
■	Trusta and Philanthropic Grants	5%

Allocation of resources 2010/2011



■	Brosnan Youth Services.	50%
■	Support After Suicide	6%
■	Comunity Building and Settlement Programs . .	18%
	(African Program, Vietnamese Welfare Resource Centre, Holy Family Social Services and Collingwood Community Information Centre)	
■	Youth Programs	19%
	(Connexions, TOE, Artful Dodgers Studios)	
■	Policy and Research	7%

FUNDERS AND SUPPORTERS

Jesuit Social Services is grateful to all of our funders and supporters. We gratefully acknowledge the substantial funding we receive from all levels of government with whom we share a commitment to enhance the lives of the individuals, families and communities we serve.

Government, Trust & Foundation Supporters

Attorney Generals' Department (Victoria)
Bokhara Foundation
City of Melbourne
City of Yarra
Department of Community Services (New South Wales)
Department of Education and Early Childhood Development (Victoria)
Department of Education, Employment and Workplace Relations (Federal)
Department of Families, Community Services and Indigenous Affairs (Federal)
Department of Health and Ageing (Federal)
Department of Human Services - Child Protection and Family Services (Victoria)
Department of Human Services - Disability Services (Victoria)
Department of Human Services - Supported Accommodation Assistance Program (Victoria)
Department of Human Services - Youth Justice (Victoria)
Department of Immigration and Citizenship (Federal)
Department of Innovation, Industry and Regional Development (Victoria)
Department of Justice (Victoria)
Holy Family Parish
Inner North Community Foundation
Legal Services Board

Melbourne Community Foundation
Newsboys Foundation
Scanlon Foundation
Victorian Multicultural Commission
Vincent Fairfax Family Foundation

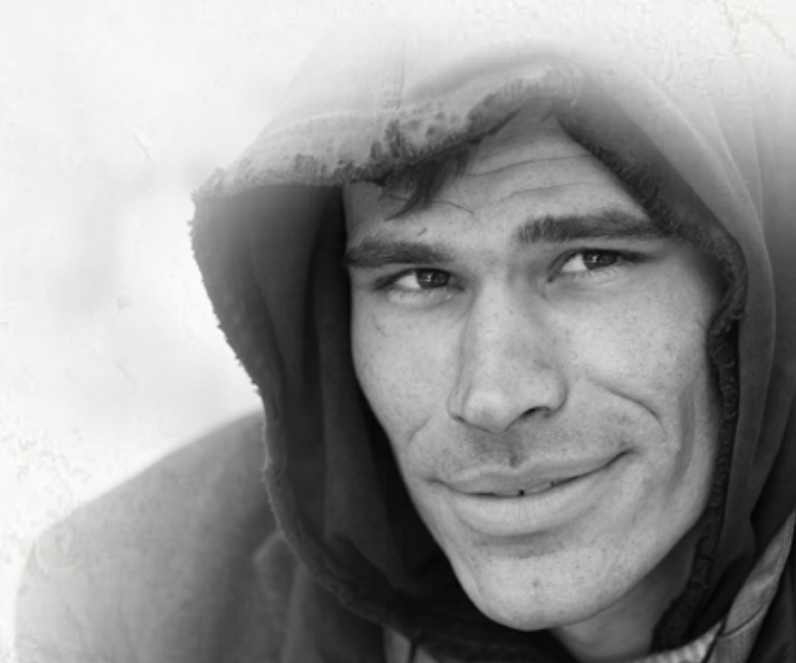
One Foot Raised Development Fund Supporters

Ian and Joan Ball
Trish Barr
Anthony Burgess
Mary Calman
Rose-Mary Cassin
David and Debbie De Souza
Margaret Ferla
Chris and Kathy Garnaut
Michael Green
John Kearney
John Kelly
Mark and Rhonda Korda
David and Jane Martin
Chris McCabe
Barry O'Callaghan
Miss Dora O'Sullivan and Mrs Rita Andre
Simpson Family Foundation
Michael and Maria Tehan
Alice Vaughan

Fundraising Supporters / Partners

2XU
3AW
Adriatic Furniture
Angelcrest
Antonio Oriti Menswear
Austereo
Ben Wolstencroft Photography
Bicycles Inc
Bill Gurry
Biore
Blue Buddha
Clever Wraps
Concert AV
Cycling Profiles
D&D Digital Printing
The Dili Allstars
Fuji Xerox
Giant
Global Ballooning
Grollo Leisure & Tourism
Herald Sun
IT Connexion
John Carmody
John Frieda Haircare
John Funder
KMR Safety First
KPMG
Limelight Sports
Medibank Icehouse

Melbourne Museum
Melbourne Racing Club
NAB
Rochford Wines
Sevenhill Wines
Shotz Sport Nutrition
Signed and Framed
Sofitel Melbourne on Collins
Summit Fleet Leasing and Management
Voice Telecoms
The Wiggles
Walsh's Florist



CONTACT DETAILS

Jesuit Social Services Central Office

371 Church Street (PO Box 271)
Richmond Vic 3121

Tel: (03) 9421 7600

Fax: (03) 9421 7699

Email: jss@jss.org.au

Web: www.jss.org.au

*As of January 2012, Central Office will be located at rear of 326 Church St Richmond.

Jesuit Community College

1 Langridge Street (PO Box 1141)
Collingwood Vic 3066

Tel: (03) 9415 8700

Fax: (03) 9415 7733

Email: training@jss.org.au

Web: www.jesuitcommunitycollege.org.au

Just Leadership

Bush Hut (Mel Ref 2D, F10) 110 Studley Park Road
Kew Vic 3101

Tel: (03) 9853 5710

Fax: (03) 9855 1425

Email: justleadership@jss.org.au

Web: www.justleadership.org.au

Brosnan Youth Services - North West

10 Dawson Street (PO Box 284)
Brunswick Vic 3056

Tel: (03) 9387 1233

Fax: (03) 9387 1178

Email: brosnan@jss.org.au

Brosnan Youth Services - East

Level 1, 16-18 Ellingworth Pde
Box Hill Vic 3128

Tel: (03) 9899 0736

Fax: (03) 9898 3506

Brosnan Youth Services - South

155 Lonsdale Street Dandenong Vic 3175
(PO Box 393 Dandenong Plaza 3175)

Tel: (03) 9791 6596

Fax: (03) 9791 6524

Community Justice Group Conferencing

10 Dawson Street (PO Box 284)
Brunswick Vic 3056

Tel: (03) 9387 7871

Fax: (03) 9387 1178

Email: communityjustice@jss.org.au

Holy Family Social Services

Emert Parade, Emerton NSW 2770
(PO Box 86 Mt Druitt NSW 2770)

Tel: (02) 9628 7272

Fax: (02) 9628 6139

Email: holyfamily@jss.org.au

The Outdoor Experience

Bush Hut (Mel Ref 2D, F10) 110 Studley Park Road
Kew Vic 3101

Tel: (03) 9855 2633 **Fax:** (03) 9855 1425

Email: toe@jss.org.au

Web: www.toe.org.au

Collingwood Community Information Centre

74 Vere Street
Collingwood Vic 3066

Tel: (03) 9416 4494

Fax: (03) 9419 8514

Email: communities@jss.org.au

Vietnamese Welfare Resource Centre

Ground Floor 58 Holland Court
Flemington Vic 3031

Tel: (03) 9376 2033

Fax: (03) 9376 4687

Email: vwrc@jss.org.au

African Program

Ground Floor 120 Racecourse Rd (PO Box 55)
Flemington Vic 3031

Tel: (03) 9376 5747

Fax: (03) 9376 9575

Email: african@jss.org.au

Support After Suicide

'Lockington' 16 The Vaucluse (PO Box 79)
Richmond Vic 3121

Tel: (03) 9427 9899

Fax: (03) 9427 7119

Email: aftersuicide@jss.org.au

Web: www.supportaftersuicide.org.au

*As of January 2012, Support After Suicide will be located at rear of 326 Church St Richmond.

Jesuit Social Services, Collingwood

1 Langridge Street (PO Box 1141)
Collingwood Vic 3066

Tel: (03) 9415 8700

Fax: (03) 9415 7733

Email: gateway@jss.org.au

Learning & Practice Development Unit

1 Langridge Street (PO Box 1141)
Collingwood Vic 3066

Tel: (03) 9415 8700

Fax: (03) 9415 7733

Email: staff.training@jss.org.au

Connexions

1 Langridge Street (PO Box 1141)
Collingwood Vic 3066

Tel: (03) 9415 8700

Fax: (03) 9415 7733

Email: connexions@jss.org.au



BUILDING A JUST SOCIETY

ANNUAL
REPORT
2010/2011

WWW.JSS.ORG.AU