



**JESUIT SOCIAL SERVICES  
ANNUAL REPORT 2012-2013**

We acknowledge the traditional custodians of this  
land and pay respect to their elders past and present.





# CONTENTS

Vision, Mission, Values .....	4
Message from the Chairman .....	5
Message from the CEO .....	6
Message from the Provincial .....	8
The Board .....	10
Governance .....	12
Strategic Plan .....	14
Highlights 2012/2013 .....	16
Research, Policy and Advocacy .....	20
Justice and Crime Prevention .....	22
Mental Health and Wellbeing .....	24
Settlement and Community Building .....	26
Education, Training and Employment .....	28
Just Leadership .....	29
Fundraising .....	30
Volunteering .....	32
Financial Summary .....	34
Funders and Supporters .....	35
Contact Details .....	36

Printed on low environmental impact, FSC accredited paper.



# VISION, MISSION, VALUES

Jesuit Social Services works to build a just society where all people can live to their full potential - by partnering with community to support those most in need and working to change policies, practices, ideas and values that perpetuate inequality, prejudice and exclusion.

## OUR VISION

Building a Just Society

## OUR MISSION

Standing in solidarity with those in need  
Expressing a faith that promotes justice

## OUR VALUES

Welcoming

- forming strong, faithful relationships

Discerning

- being reflective and strategic in all we do

Courageous

- standing up boldly to effect change

## What We Do

We strengthen and build respectful, constructive relationships for:

- effective services - by partnering with people most in need and those who support them to address disadvantage
- education - by providing access to life-long learning and development
- capacity building - by refining and evaluating our practice and sharing and partnering for greater impact
- advocacy - by building awareness of injustice and advocating for social change based on grounded experience
- leadership development - by partnering across sectors to build expertise and commitment for justice.

## Our Service Delivery and Advocacy

The promotion of education, lifelong learning and capacity building is fundamental to all our activity. We believe this is the most effective means of helping people to reach their potential and exercise their full citizenship, and to strengthen the broader community.

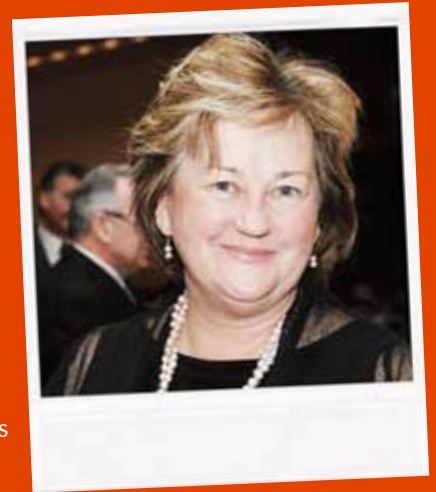
Our service delivery and advocacy focuses on the following key areas:

- justice and crime prevention - for people involved with the criminal justice system
- mental health, support and wellbeing - for people with multiple and complex needs and those affected by trauma, suicide, and complex bereavement
- settlement and community building - for people recently arrived in Australia, asylum seekers, displaced people and disadvantaged communities
- education, training and employment – for people with barriers to sustainable employment.

# MESSAGE FROM THE CHAIRMAN

The past year, the 36th in Jesuit Social Services' history, has been marked by a number of achievements in our efforts to build a just society.

In February, we released the results of a 12 month research project into the experiences of children on remand in Victoria. *Thinking Outside: Alternatives to Remand for Children* highlighted the need for reform to address the root causes of crime and to keep vulnerable and disadvantaged children out of custody. It has formed the backbone of many of our advocacy efforts during the year and we will continue to pursue some of the recommendations arising from the research, including a push to raise the age of criminal responsibility from 10 to 12 years.



In June, our African Australian Inclusion Program, a partnership with the National Australia Bank that provides paid work experience placements for people from African communities, recruited its 100th participant. Of the people who have completed their work placement, 86% have moved into further employment, a remarkable reflection of the success of this initiative.

Jesuit Community College has continued to serve a deep need in the community for education and vocational programs for disadvantaged people, many of whom have not previously had the chance to acquire the skills and knowledge to take the next step towards employment. The College, which opened a little over two years ago with 79 students, now has a presence in 12 locations and served over 1,000 students in 2013.

Many of our programs are dependent on State and Federal funding, and we are grateful for this support. We have, however, expressed concern during the year over several government policies, in particular the attitudes shown to those who seek asylum on our shores – both new arrivals and those we work with in community detention. We called on members of both political parties to accept Australia's responsibility towards asylum seekers and to act justly and with a proper compassion towards them.

In the justice sphere we have seen an increasing push at the State level towards expanding our prison system rather than addressing the underlying problems that lead to criminal behaviour. We believe that attention and funds should rather be focused on addressing: poor education, mental health issues, drug and alcohol misuse, neglect, abuse and violence in the home. We know that detention is likely to exacerbate rather than solve antisocial behaviour and that prevention represents a better outcome for all, and increases community safety.

I would like to acknowledge our committed staff who strive, often in difficult circumstances, for better outcomes for disadvantaged and marginalised people in our society. Volunteers, donors and other supporters are crucial to the success of our operations, and I thank them for their contributions to our work over the past year. Finally, I would like to express my gratitude to our Board members and the Australian Jesuit Province for their direction and encouragement as Jesuit Social Services expands and develops its work.

*P.M. Faulkner*

Patricia Faulkner AO  
Board Chairman



# MESSAGE FROM THE CEO

At the opening of Jesuit Social Services' new Central Office in December 2012, it was noted that we are now custodians of a place from which Jesuits have provided care and education to disadvantaged people for nearly 150 years. In drawing on these historical links, we reaffirmed our mission and commitment to furthering our work of building a just society. Our Jesuit heritage informs, inspires and sustains us as we seek out new ways of fulfilling our shared vision that we be with people where they dwell, work and struggle.

Throughout the year, we continued to refine and strengthen our twin strategic approaches of 'doing' by intervening directly to address disadvantage through effective services and education, and 'influencing' through our capacity building, advocacy and leadership development activities.

We have seen growth in our programs - Jesuit Community College has seen a significant growth in numbers of students enrolled and is developing partnerships with employers to open up jobs for our participants. Another key element of this pathway is the living classrooms of our Ignite Cafe social enterprises. Two cafes were established during the year in the Melbourne suburbs of Hawthorn and Camberwell.

We also saw the launch of the Next Steps project, supporting vulnerable young people in the criminal justice system, who are also at risk of homelessness, to find stable accommodation, to re-engage with family and friends, and access learning and education opportunities.

In New South Wales we strengthened our foundations, establishing a local advisory group to guide our work there. We gathered with friends and supporters in November 2012 to raise much needed funds to support our work in Western Sydney. We also increased our advocacy efforts there in the criminal justice area.

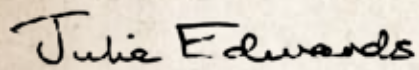
In Central Australia, our ongoing relationship with Eastern and Central Arrernte people is bearing fruit. In one location the local governance structure that we have partnered with the community to develop is providing solid leadership in their context. Our work in Central Australia was recognised at the 2013 Catholic Social Services Australia Awards where we received the award for Excellence in Service.

We have continued to strive to influence hearts and minds through our research and advocacy and have promoted the cause of justice across the community. We have made submissions to government and parliaments at state and national levels on social justice issues that impact on the people and communities we work with.

In recognising the increasing global nature of many of the problems we face, most notably the environment and the plight of refugees, Jesuit Social Services has strengthened its collaboration with other organisations in our region and internationally. In line with this, we have taken on a leading role in the response to ecological justice and the governance of natural and mineral resources, which are international advocacy priorities for the Jesuits.



As a Jesuit organisation we will remember 2013 for the historic election of a Jesuit Pope. For us, of particular significance has been Pope Francis' challenge to go to the frontiers, to live on the edge of society, and to be audacious. This has strengthened our own resolve to stand in solidarity with those in need, a hallmark of our work since 1977. Jesuit Social Services will continue to draw from our heritage and experience in building a more just society as we take up this challenge daily. I am very grateful to the staff, volunteers, friends and supporters of Jesuit Social Services for making this possible. Thank you for your support of our work.



Julie Edwards  
Chief Executive Officer

Our Jesuit heritage informs,  
inspires and sustains us as we  
seek out new ways of fulfilling  
our shared vision that we be with  
people where they dwell, work  
and struggle.

# MESSAGE FROM THE PROVINCIAL

When Father General Adolfo Nicolas called Jesuits to stand at the frontiers of Church and society, we saw the work of Jesuit Social Services as central to our response. In 2013, contrasting developments in Australian public life and in the Catholic Church has brought into sharper relief the importance of what you do.

In the Catholic Church, Pope Francis invited Catholics to leave their comfortable spiritual homes to venture into the country of the poor. He made this concrete by celebrating Holy Thursday Mass at a juvenile detention centre where he washed the tattooed feet of young men and women, including Muslim detainees. Later he went to the island of Lampedusa to grieve and do penance for the people who died on boats when seeking protection.

In Australia, on the other hand, we protect our comfortable society by pushing off onto our impoverished neighbouring countries people who seek our protection. We pay them to maintain houses of misery.

In all our Jesuit works we have made the choice between these two ways of proceeding. So in 2013 I have been moved and delighted to see that where Pope Francis went, Jesuit Social Services has been before him. So much of Jesuit Social Services' work, its founding core, has been with disadvantaged young people, particularly those who have been in the justice system. Jesuit Social Services' care for young people is not based on their good families, on their intelligence, their wealth or their skills, but on their simple humanity and the special love that God has for each of them.

When Pope Francis went to Lampedusa to be with people seeking protection, I was pleased that he was also following in Jesuit Social Services' footsteps. The treatment of asylum seekers is a crucial moral and spiritual issue in Australia. So the work of such committed people from Jesuit Social Services and Jesuit Refugee Service in accompanying vulnerable people in community detention is of vital importance. Jesuit Social Services gives face to people who are so often treated as things.

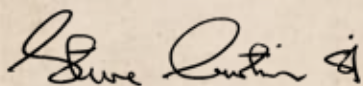


## Jesuit Social Services gives face to people who are so often treated as things.

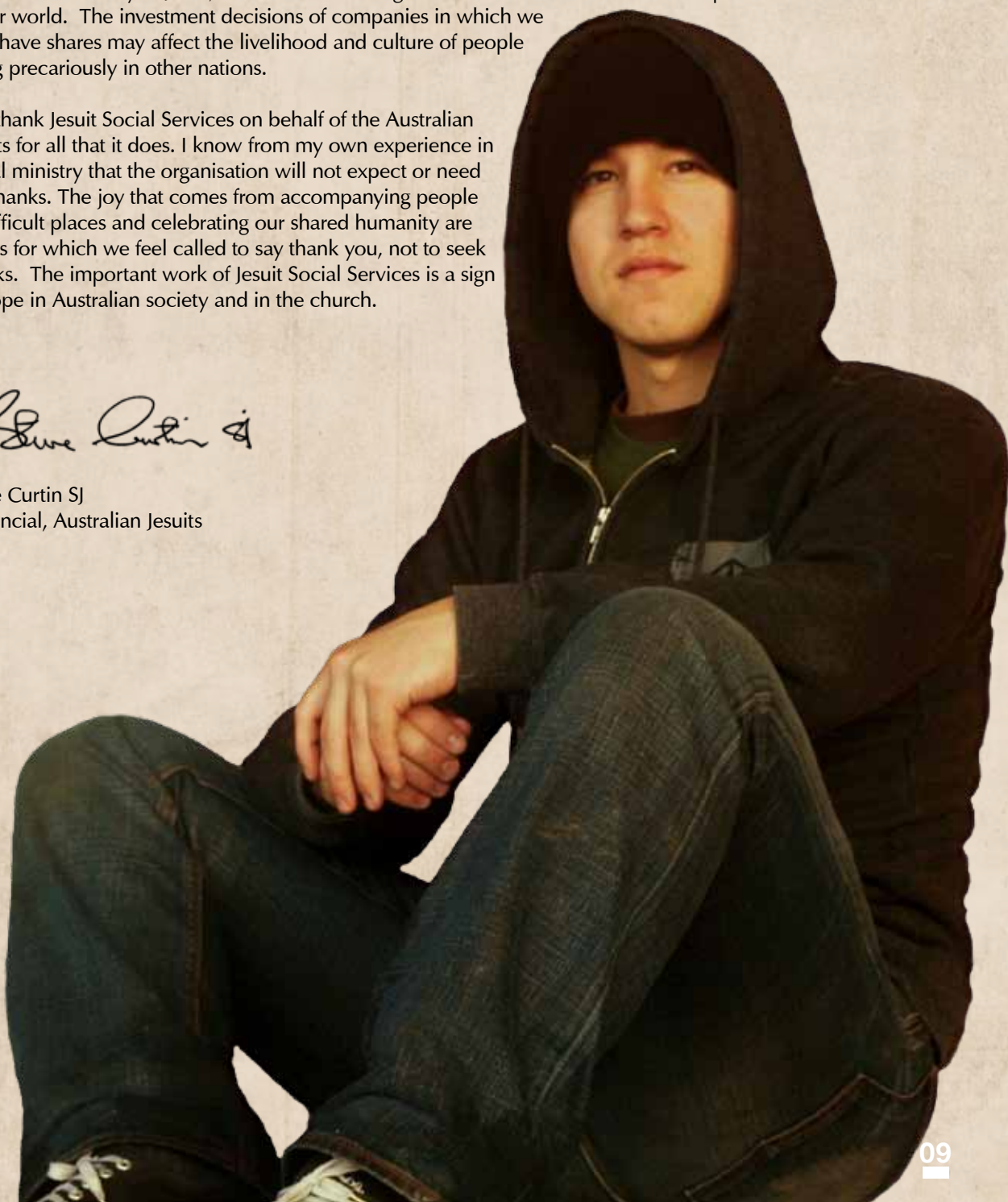


In these two areas, Jesuit Social Services is the hands and the feet of the Australian Jesuit Province, as we accept Pope Francis' challenge to leave our comfort and go out into our world. I have also been delighted to see Jesuit Social Services develop cooperation with the Jesuit world beyond Australia. This cooperative work with Jesuits in the Asia Pacific region and the International Society on issues of social justice, ecology and mining is relatively unseen. But it builds the Jesuit recognition that we do not simply belong to the Australian Province but to the international Society of Jesus, and Australian recognition that what we do here has impact on a wider world. The investment decisions of companies in which we may have shares may affect the livelihood and culture of people living precariously in other nations.

So I thank Jesuit Social Services on behalf of the Australian Jesuits for all that it does. I know from my own experience in social ministry that the organisation will not expect or need my thanks. The joy that comes from accompanying people in difficult places and celebrating our shared humanity are things for which we feel called to say thank you, not to seek thanks. The important work of Jesuit Social Services is a sign of hope in Australian society and in the church.



Steve Curtin SJ  
Provincial, Australian Jesuits





# THE BOARD

## **Patricia Faulkner (AO)**

Chair of the Jesuit Social Services Board, Patricia is a former Partner with KPMG, Australia. She is also the chair of the National Health Performance Authority, a member of the COAG Reform Council and a member of the Commonwealth Grants Commission. Patricia has held a diverse range of high level positions, including Secretary, Department of Human Services (Victoria) from 2000-07, Director of Consumer Affairs (Victoria) and Director of Occupational Health and Safety. She is a Fellow of the Australian College of Health Services Executives and a National Fellow of Institute of Public Administration Australia. Patricia's other previous positions of note include: Chair of the Board Peter MacCallum Cancer Centre, Chair of the Australian Social Inclusion Board, Director of Victorian Managed Insurance Authority, member of the Companies and Securities Advisory Committee, Chair of the Enquiry into Childcare in Australia, Director, Vic Super and the Melbourne International Arts Festival Board. Patricia was made an Officer of the Order of Australia in 2008 for service to the community through the development and implementation of public policy relating to health, aged care, children's services, disability services and housing.

## **Associate Professor Margarita Frederico**

Associate Professor Margarita Frederico, B.A., Dip. Soc. Studs., B.S.W. (University of Melbourne), M.S.W. (Smith), M.B.A. (University of Melbourne), is Director of Postgraduate Programs, School of Social Work and Social Policy. Margarita has extensive experience in teaching, research and evaluation. She designed and established the School of Social Work at Australian Catholic University Canberra, and has designed postgraduate programs in Management of Human Service Organisations, postgraduate programs for delivery in Indonesia, and has partnered with other La Trobe University staff in the development of the Postgraduate Certificate in Complex Community Care. Margarita has published in journals and through evaluation reports. She has undertaken a number of consultancies for Federal and State Government and international organisations. Margarita was a member of the Monash University team which researched the management of child abuse allegations in the Family Court of Australia and the development of the Magellan model to manage allegations, which was adopted by the Court. Margarita has experience as a member of a number of Boards of Directors of community organisations and joined the Jesuit Social Services Board in 2006.

## **Fr Julian Slatterie SJ**

Father Julian Slatterie SJ was born in Melbourne, entered the Society of Jesus in 1954 and was Ordained a Priest in 1966. He completed a Bachelor of Commerce at Melbourne University, a Diploma of Education at University of New England and has had a distinguished career in education as Deputy Headmaster of St Ignatius College Sydney, Headmaster Xavier College Burke Hall and Headmaster Xavier College, Kostka Hall. Fr Slatterie continues his involvement with Xavier College as a staff member and is the former Treasurer of the Society of Jesus in Australia. Fr Slatterie has served as a Board Member of Jesuit Social Services Board since 1996.

## **Jennifer McAuley**

Jennifer McAuley is a retired social worker. She has had a wide range of professional experiences in senior social work and executive level positions. She has worked in Victoria, South Australia and Tasmania. Jennifer worked in areas of Child Protection, Disability Services, Primary Care and Prevention, Ambulance Services and Youth Justice. She recently retired from the position of the Department of Human Services Representative on the Victorian Youth Parole Board, a position she held for 12 years. Currently Jennifer Chairs The Hope for Cambodia Children's Foundation. This Foundation supports children and families affected by the HIV virus in Battambang, Cambodia.

## **Rev Dr Brian F McCoy SJ**

Father Brian McCoy SJ is a Jesuit, the Australian Province Tertian Director (The Australian Tertianship is an international program for Jesuits in their final stage of formation) and Assistant to the Australian Provincial for Ministries Among Aboriginal and Torres Strait Islander Peoples. In 1977 he was ordained a priest. In the decades that followed, he worked in a variety of Aboriginal and Torres Strait Islander communities across north Australia. In 2000 he returned to Melbourne and then completed a PhD at The University of Melbourne that focused on Aboriginal men's health. He continues to hold adjunct positions in Aboriginal and Torres Strait Islander health at La Trobe University, James Cook University, the Telethon Institute for Child Health Research and The University of Melbourne.



### Sr Libby Rogerson IBVM

A Loreto sister, Libby recently completed her role as Executive Officer of Mary Ward International Australia – the Loreto Sisters' aid, development and volunteer organisation. From 1999 - 2009 Libby was Coordinator of Social Justice and Director of Caritas in the Diocese of Parramatta. During this period she had considerable involvement in work with refugees and asylum seekers and was one of the founders of the House of Welcome, providing support, referral and emergency accommodation for refugees and asylum seekers. Libby chaired the Board of the House of Welcome for some years. Libby is a member of the Conference Of Leaders Of Religious Institutes NSW Justice Committee, member of St Francis Social Services Board, Deputy Chair Loreto Normanhurst School Council, Board member of CentaCare (Wilcannia-Forbes) and a member of the Loreto Sisters Justice, Peace and Integrity of Creation Committee.

### David Sutton

David Sutton has degrees in Education and Theology and a Masters in Counselling and Human Services. He has lived and worked in diverse settings including ten years at Corpus Christi Community Greenvale, for men with a background of homelessness and three years at Nauiyu, an aboriginal community in the Northern Territory. He is currently working in the welfare area of Catholic secondary education for boys. David was presented with the Ignatian Medal in 2006 for his work alongside Jesuits in support of men with a background of homelessness.

### Bernie Szentirmay

Bernie is a Partner in the major accounting and advisory firm KPMG. He has extensive experience in providing audit, advisory and risk management services to public and private entities across a broad range of industries. Bernie also provides professional services to a number of not-for-profit entities. Bernie is Chairman of the Risk and Finance Committee.

### Shane Healy

Shane is the General Manager of 3AW/Magic 693 Radio. He has 20 years broadcasting experience in management and leadership roles with a broad range of responsibilities ranging from budgeting and financial management, marketing and strategic planning to legal and human resources issues. Shane is Chairman of the Fundraising Committee. Shane was the recipient of the Sir Bernard Callinan Award as dux of Aquinas Ballarat Teachers College and taught at Catholic College Bendigo during the 1980's. He is a member of the Xavier Council.

### Jennie Hickey

Jennie Hickey is the Delegate for Social Ministries for the Australian Jesuit Province. She has a degree in Education, a Masters in Administrative Leadership and is currently completing a Masters of Theology. She has extensive experience in education across Sydney working at an executive level for the past 15 years before moving to Melbourne.

### Julian McMahon

Julian McMahon is a Barrister at the Victorian Bar. He practises in criminal law in Australia and also works on cases in numerous countries for people facing the death penalty or harsh jail terms. A long history of involvement with various Jesuit endeavours has complemented Julian's works with the Loreto sisters through Mary Ward International.



Patricia



Margarita



Julian



Jennifer



Brian



Libby



David



Bernie



Shane



Jennie



Julian



# GOVERNANCE

Jesuit Social Services Ltd is a work of the Australian Jesuit Province, operating under an independent Board of Directors as an incorporated organisation. All Directors have a strong commitment to social justice and to 'building a just society'.

At the time of writing, there are currently 11 non-executive members on the Jesuit Social Services Board – the Chairman, four Provincial Appointees and six independent Directors.

The Directors receive no remuneration for their role on the Board and accept full responsibility for the governance of the organisation in accordance with the Australian Corporations Law and community standards.

The Board has adopted a formal Governance Charter and good corporate governance is a fundamental part of the culture and business practices of Jesuit Social Services.

The Board sets the strategic direction and oversees the performance of the organisation with the support of the National Strategic Planning Committee, Governance Committee, Risk and Finance Committee, Fundraising Committee and Policy Committee.

An individual Director will not participate in decision making processes if any potential conflict of interest is likely to arise.

The composition of the Board of Directors and the performance of the Board are reviewed regularly to ensure that the Board has the appropriate mix of skills and experience and is operating in an effective manner.

New Directors receive an induction into the organisation and Directors participate in an ongoing development program concerning their role, responsibilities, our Ignatian heritage and the work of Jesuit Social Services.

The Board supports open and transparent communication with stakeholders while regarding the confidentiality of client information as critical.

Our legal status is defined as:

- A company limited by Guarantee
- A Registered Charity holding an Endorsement for Charity Tax
- Deductible Gift Recipient (DGR)
- Concessions and Public Benevolent Institution (PBI) status, allowing tax deductions for donations
- Fringe Benefit Tax (FBT) exempt.

A full set of our financial accounts is available free of charge from Central Office. Please contact (03) 9421 7600 or [jss@jss.org.au](mailto:jss@jss.org.au) to obtain a copy.

## COMMITTEE MEMBERSHIP

✓ = committee chairman

NON-EXECUTIVE DIRECTORS	BOARD	RISK & FINANCE COMMITTEE	PROPERTY COMMITTEE	NATIONAL STRATEGIC PLANNING COMMITTEE	POLICY COMMITTEE	GOVERNANCE COMMITTEE	FUNDRAISING COMMITTEE	ONE FOOT RAISED SUB-COMMITTEE
Ms Patricia Faulkner AO	✓			✓		✓		
Assoc. Prof. Margarita Frederico	✓			✓	✓	✓		
Fr Julian Slatter SJ	✓	✓	✓					
Ms Jennifer McAuley	✓			✓				
Rev Dr Brian McCoy SJ	✓							
Sr Libby Rogerson IBVM	✓							
Mr Bernie Szentirmai	✓	✓	✓				✓	
Mr David Sutton	✓			✓	✓			
Mr Shane Healy	✓						✓	✓
Mr Julian McMahon	✓				✓			

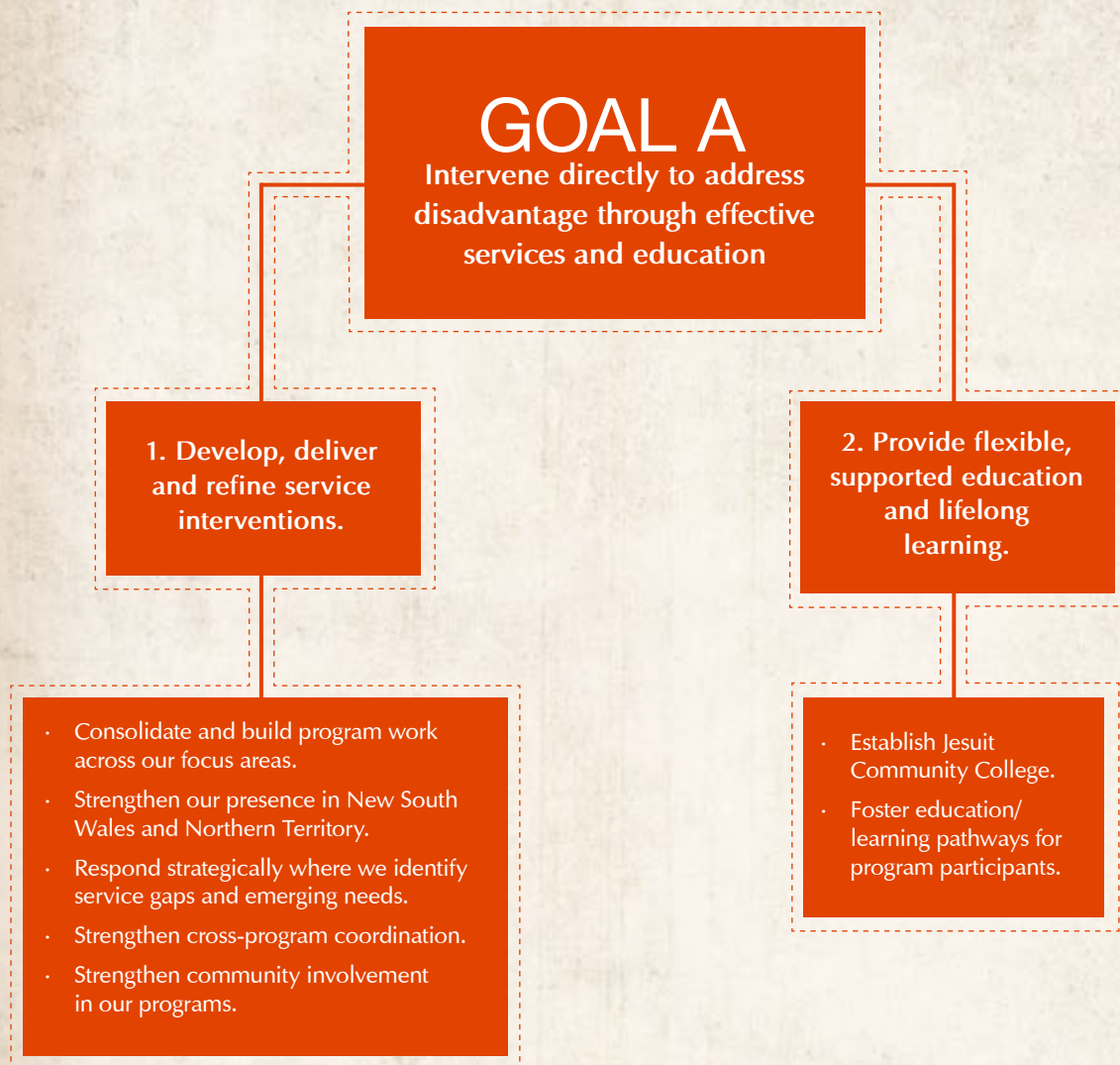






# STRATEGIC PLAN

## 2011-2014





## GOAL B

Influence through capacity building, leadership development and advocacy

### 3. Build capacity among:

- participants
- staff
- supporters and volunteers
- sector/partner organisations
- Jesuit network
- organisation.

### 4. Strengthen our advocacy role.

- Build a social research/policy/advocacy unit of national standing.
- Pursue a proactive research and advocacy agenda linked to key focus areas.
- Build a network of advocacy friends.

### 5. Leadership development of community/business/government sectors.

- Draw on our values and heritage to promote socially informed leadership within the broad community.
- Build on, and form, partnerships to create access for disadvantaged people into the Australian community at all levels, including business.



# 2012/2013 HIGHLIGHTS

## AAIP 100th participant – 14 June 2013

The African Australian Inclusion Program (AAIP) is a partnership between Jesuit Social Services and the National Australia Bank (NAB) that provides paid work experience placements for qualified African Australian people. On 14 June 2013, the program celebrated the recruitment of its 100th participant.

At an event in Melbourne to mark the occasion, Jesuit Social Services CEO, Julie Edwards said, "This is a great example of how business and communities can work together to overcome disadvantage and build a more just society. Eighty six per cent of people who have completed paid work experience and mentoring through this program have moved into further employment. This is a remarkable achievement that should be built on throughout our business community."

The success of the program is testament to the contribution of many supporters, particularly from within African Australian communities. The role played by NAB must be applauded. Staff members at Jesuit Social Services and NAB identified the problem of under-employment in the African Australian community and used the resources they had available to take positive action.

The event also marked the launch of research which examined the benefits of the program. The research found that for every one dollar invested in the AAIP, stakeholders were receiving an equivalent of \$6.24 in social value. This demonstrates that providing genuine work experience can open the door to further opportunities for people from migrant communities.

This program provides a model that other businesses could use to help people who are marginalised in our community to have the opportunity to enter the workforce and gain experience to equip them to move on to ongoing employment. In doing so, business can meaningfully contribute to building a more inclusive and just society.





### Thinking Outside launch – 26 February 2013

Jesuit Social Services released a research report on 26 February 2013 that highlights the vulnerability of children who have contact with the criminal justice system. The research called for reforms including increasing the age of criminal responsibility in line with United Nations recommendations.

Speaking at the launch of *Thinking Outside: Alternatives to Remand for Children*, Jesuit Social Services CEO, Julie Edwards said, "This research confirms the fact that vulnerable children from disadvantaged communities are ending up in the criminal justice system. Too many of these children spend their teenage years cycling in and out of custody. Reform is needed to address the root causes of crime and to keep these children out of custody and at home with their families."

The research revealed that children who offended at younger ages were amongst the most vulnerable in our community. Our analysis showed that children who were 14 years or younger when first involved in the justice system were more likely to come from communities with higher numbers of vulnerable children.


Many children are being arrested and remanded overnight or over the weekend only to be released the next day at court. We know that about 40% of children who are remanded on the weekend are released within 1 to 3 days.

The research also showed that 12.6% of the youth justice population was Aboriginal, despite making up only 1% of the population of young people. What is particularly concerning is the young age at which so many Aboriginal children come into contact with the justice system. More needs to be done to break the cycle of disadvantage and support the development of these children.

*Thinking Outside* was a 12 month research project into the experiences of children on remand in Victoria, funded through the Legal Services Board of Victoria. It includes analysis of data provided by the Department of Human Services and Victoria Police as well as observations of court hearings and interviews with children. The report was launched by President of the Children's Court, Judge Paul Grant at the Brosnan Centre in Brunswick (pictured).





A close-up, profile view of a young boy with light brown, slightly messy hair and blue eyes. He is looking off-camera to the right with a thoughtful or serious expression. The background is blurred, suggesting an outdoor setting.

The research revealed that children who offended at younger ages were amongst the most vulnerable in our community.



### **Jesuit Social Services NSW Fundraising Dinner – 30 November 2012**

St Ignatius College Riverview hosted a dinner for over 200 people to raise funds for Jesuit Social Services' programs in NSW. Members from the broader Jesuit network came to support the event, with people from the communities of Holy Family Parish Emerton, St Mary's North Sydney Parish and St Canice's Parish Elizabeth Bay together with past parents of St Ignatius College Riverview and St Aloysius College.

The evening included speeches from Jesuit Social Services' Chairman of the Board, Patricia Faulkner, and CEO, Julie Edwards, as well as a DVD about the work in Mount Druitt. Jesuit Social Services' presence in Mount Druitt is centred around social enterprise with a supermarket serving as a 'living classroom' for people in the community who face barriers to mainstream education, training and employment opportunities.

The guests enjoyed a trivia game, lucky card draw, raffle and live auction which all contributed to a wonderful fundraising effort. The John Field Band had guests kicking up their heels for an enjoyable end to the evening.

The event was supported by an energetic team of volunteers and staffed by volunteer students and young people.



### **Ignite Melbourne opening – 29 October 2012**

The doors opened and the coffee machines ran hot when our two new social enterprise cafés, Ignite, opened in Melbourne's eastern suburbs of Hawthorn and Camberwell.

The cafés are centrally located within the library precincts of both suburbs and are positioned well to be a source of good coffee, fresh creative food and a welcoming space for the community.

Ignite provides accredited training and work experience programs specifically tailored to people who face obstacles to mainstream training and employment pathways.





# RESEARCH, POLICY AND ADVOCACY

The Policy Unit complements the organisation's range of community service programs. It identifies models of good practice, service gaps and emerging trends and policy issues. This provides the basis for the organisation to advocate for change in keeping with our vision of 'building a just society'.

We strive to influence the hearts and minds of people through a variety of means.

The unit's research and policy papers provide a solid basis from which the organisation advocates strongly to governments and the broader community for appropriate policies, legislation and funded programs to improve the lives of disadvantaged people, families and communities.

A focal point of the past year has been the completion and launch of our research *Thinking Outside: Alternatives to remand for children*. This research and focus in the youth justice area has complemented our ongoing work on law and order issues in response to the Victorian and New South Wales State Governments' implementation of their 'law and order' agenda. Increasingly the impacts of sentencing reforms, as well as changes to bail and most recently parole, are being felt across the wider criminal justice systems.

In response, we have continued to advocate, through direct meetings with government, other key stakeholders and the media, for policies that are based on sound evidence and for funding to be directed away from imprisoning more people to crime prevention and diversionary programs.

Jesuit Social Services has also been advocating nationally across a wide range of areas relevant to Jesuit Social Services' work. This has increasingly included advocacy in the Northern Territory and New South Wales in line with the organisation's expanding work there. Over the past year we have made social policy submissions in relation to:

- the Northern Territory Government's consultation on the Alcohol Mandatory Treatment Bill 2013
- the Victorian Government and Victorian Council of Social Services (VCOSS) Service Sector Reform project
- the Senate Inquiry into the Value of a Justice Reinvestment Approach to Criminal Justice in Australia
- the Victorian Government's development of the Melbourne Planning Strategy
- the New South Wales Parliamentary Inquiry Into Strategies to Reduce Alcohol Abuse Among Young People
- the Commonwealth Department of Employment's consultation on the Future of Employment Services
- the Victorian Department of Education and Early Childhood Development's consultation on Reforming Support to Vulnerable Young People
- the Victorian Parliamentary Inquiry into the Handling of Child Abuse by Religious and other Organisations
- the Victorian Government's consultation on Improving Diversion for Young People in Victoria
- the Senate Inquiry of the Senate Select Committee on Electricity Prices
- the consultation on developing a National Aboriginal and Torres Strait Islander Suicide Prevention Strategy
- the Senate Inquiry into the Adequacy of the Allowance Payment System
- the Victorian Department of Human Services' consultation on a new Victorian Public Housing Framework.

Our media activity has been equally wide ranging, with an increasing focus on the need for better pathways out of disadvantage and into learning and employment and on advocacy in relation to asylum seekers. We have continued to increase our activity in the social media space, becoming active on Twitter and Facebook and establishing our regular Just Advocacy Update on the Jesuit Social Services website.

Jesuit Social Services' policy submissions and media releases are regularly uploaded on our website. Hard copies can be provided upon request.





We strive to influence the hearts and minds of people through a variety of means.



# JUSTICE AND CRIME PREVENTION

## Brosnan Services

Brosnan Services provides individually tailored support services for people involved in the justice system or who are exiting adult prisons and/or youth justice centres. It supports those who are assessed as high risk and/or high need, with limited social and family networks, limited accommodation and support options and experiencing multiple and complex health problems.

Brosnan Services staff deliver quality programs in a manner that reflects the social justice principles of participation, equity, access and respect. Services include: intensive outreach support, case management, supported accommodation, drug and alcohol counselling, recreation programs, employment/training programs and 24/7 after hours crisis support.

## Youth Justice Community Support Services

The Youth Justice Community Support Program is an intensive support program for young people aged 10-21 engaged with the justice system.

Our approach aims to:

- achieve a reduction in the rate, severity and frequency of re-offending
- enable young people to make an effective transition to adulthood
- develop young people's capacity for economic, social and cultural participation.

Service delivery is based around the provision of two pathways of support: intensive support (including assertive engagement and outreach and provision of after-hours response where appropriate) and supported referral. By offering these two distinct pathways, there is capacity to provide a service to the young people with the highest needs on Youth Justice Orders but also to take advantage of the enhanced networks developed by a consortium of service providers to facilitate appropriate referral to the broader service system for other young people.

Young people assisted: 254 (male: 208; female: 46)

Number of new referrals: 135

## Community Justice Group Conferencing

Community Justice Group Conferencing is a program based on restorative justice principles. It is a problem-solving approach to offending that aims to balance the needs of young people, victims and the community by encouraging dialogue in a controlled and structured way between individuals who have offended, their victims and the wider community.

Referrals progressing to conference: 106

Number of conferences: 102

Conferences with victim participation: 62%

Percentage of outcome plans: 78%

## Intensive Transitional Support Services

The Intensive Transitional Support Services programs deliver case-management planning and support, including housing and material supports, assistance with family reunification, referral to specialist services and assistance with community connectedness. Funded through Corrections Victoria, the programs deliver individually tailored pre- and post-release case management services designed around the needs of the program participant.

## Link Out

Link Out provides pre-release support to men exiting prisons in the Hume region and post-release support to men living in the eastern metropolitan and Hume regions.

Number of people assisted pre-release: 86

Number of people assisted post-release: 41

## Konnect

Konnect is a culturally specific response to the needs of Aboriginal men and women as they move from prison to their communities of choice across Victoria. We work in partnership with Koori services and focus on supporting people to move back into their communities. Underpinning our work with the Aboriginal and Torres Strait Islander communities is a recognition that acknowledging culture in an affirming way is important to building a strong identity with our participants.

Number of people assisted: 65

Number of new referrals: 49



## Women's Integrated Support Program (WISP)

Brosnan Services has responsibility for the delivery of state-wide services to women exiting prison. WISP provides a gender-specific response designed to meet the needs of women including: reconciliation with children, child protection, women's health and family violence. Delivery of Konnect has meant that we are able to ensure culturally appropriate practice across our program delivery - we are uniquely placed to respond to the needs of Aboriginal women who have specific health needs and are often discriminated against in relation to both culture and gender.

Number of people assisted pre-release:	78
Number of people assisted post-release:	65

## Dillon House

Over the years Dillon House has been home to approximately 350 young men. It is a short-term supported, staffed residential program for young people up to 25 years old exiting the justice system and at risk of homelessness. Many of these young men are without the skills to live in independent accommodation and they are supported to develop these skills while at Dillon House, to assist them as they re-enter the community from prison.

Number of Dillon House participants :	10
Number of program participants	16

## Perry House

Perry House is a living skills residential program for young people with intellectual disabilities who are involved in the justice system. Perry House workers facilitate the development of independent living skills using a strengths-based practice which promotes resilience and a 'can do' approach to life. Our participants receive a comprehensive living skills assessment and then participate in the development of a 12 month program plan which aims to optimise their capacity to live in the community independently.

Many participants are also learning how to manage multiple and complex problems, such as addiction, mental illness and chronic homelessness. Perry House participants get actively involved in our home garden and bike building programs. Many of the activities they undertake in the program are transferable to competencies associated with a Certificate of Adult Education.

Number of Perry House participants:	7
-------------------------------------	---

## African Visitation and Mentoring Program (AVAMP)

AVAMP is an initiative delivered by Jesuit Social Services in partnership with Corrections Victoria, providing mentoring support to people from an African background who have been imprisoned in the Melbourne region.

The mentors are volunteers who are trained and then matched with participants. Usually the mentors begin visiting when the participant is imprisoned, with the aim to support him through his sentence and after his release. The mentors meet with participants on an ongoing basis, developing a relationship that encourages the participants' transition into community.

Number of new referrals:	22
Number of mentors trained:	12
Number of people in the program:	24
Number of people matched to mentors:	24

## Leaving Care Mentoring

The Leaving Care Mentoring program provides extended community support to young people involved in the Child Protection system, who reside in residential or home based care and are soon to be transitioning into independent living. This is done through matching volunteers from the community, who have been trained in mentoring, with young people for 12 to 18 months. The aim is that the mentor and young person develop a relationship that will continue after this time so that the mentor can be a consistent and stable role model in the young persons life.

Number of new referrals:	5
Young people in the program:	25
Young people matched to mentors:	18

## L2P

The L2P program is a state-wide initiative of VicRoads. It aims to assist young learner drivers who are facing significant barriers to achieving the 120 mandatory hours of on the road driving experience - such as lack of access to a vehicle and family support, homelessness or economic disadvantage. Learner drivers are matched with trained volunteer supervising drivers from the community who work with them to achieve their goal of 120 hours.

The L2P program managed by Jesuit Social Services was created for young people involved with Southern Melbourne Metropolitan Region Youth Justice and Child Protection programs.

Young people matched to mentors:	24
----------------------------------	----



# MENTAL HEALTH AND WELLBEING

## Connexions

Connexions provides intensive outreach support and counselling programs to young people experiencing a range of complex problems associated with their mental health and substance use.

The program seeks to engage young people in relationships of trust and understanding, providing a professional service of counselling and treatment.

Program participants:	102
Participants accessing outreach only:	45
Participants accessing counselling only:	47
Participants accessing both outreach and counselling:	10
Average age:	21

## The Outdoor Experience (TOE)

Since 1985, The Outdoor Experience (TOE) has been offering a range of outdoor adventure programs for young people aged 15 - 25 years.

TOE's Bush Adventure Therapy Program takes small groups of young people on extended wilderness journeys to some of the most remote places in Victoria. The program is for young people with alcohol and drug problems. This program provides numerous and significant opportunities for participants to develop healthy relationships with self, others and the environment.

TOE works with other community agencies, developing programs tailored for the specific needs of their clients. The programs focus on adventure, healthy living and the outdoors and may involve bushwalking, rock climbing, rafting, canoeing, caving, or cross country skiing.

Number of participants:	174
Male:	115
Female:	59
Aged under 20 years:	113
Aged over 20 years:	61

*Numbers include programs run in partnership with other agencies*

## Support After Suicide

Support After Suicide provides support to individuals, families and children who are bereaved by suicide. We offer information and resources, counselling and group programs. The program also works with health, welfare and education professionals to build their capacity to support people bereaved by suicide.

A comprehensive range of information and resources can be found on the Support After Suicide website [www.supportaftersuicide.org.au](http://www.supportaftersuicide.org.au). This website also has a link to a secure and private online community so that people bereaved by suicide can meet and interact online.

Counselling program participants:	374
New referrals:	161
Number of participants in groups:	118
Visits to website:	21,453
Online Community members:	296







# SETTLEMENT AND COMMUNITY BUILDING

## Settlement Programs

Our settlement programs respond to the needs of newly arrived families and young people from culturally diverse backgrounds. We forge partnerships with their communities to enable them to participate fully in society.

The program offers information, referrals, counselling, youth leadership and volunteer programs, homework clubs, community advocacy and governance support plus community groups for young people, families and older people. We foster community and cultural activities including forums, classes, recreational activities, information sessions, training programs and festivals.

Number of participants:	1,640
Number of total contacts:	3,018

### African youth program

Number of participants:	930
Number of total contacts:	3,730

## Collingwood Community Information Centre (CCIC)

The Collingwood Community Information Centre provides a welcoming space and high quality information and referral service staffed by public housing residents and a team of trained volunteers from the neighbourhood.

The accredited training courses have proved to be a great success, with estate residents finding satisfaction and opportunity in the skill development process. A range of community development initiatives including youth sports programs, art projects, and cultural groups are also supported through our community development program.

Number of participants	450
Number of total contacts	3,540

## Community Detention Programs

Our Community Detention Programs work in partnership with MacKillop Family Services and Catholic Care to provide accommodation and case management support to people placed in community detention while their immigration status is being determined.

Support is provided to young people and vulnerable adults in need of a safe and caring living environment with the aim to enable people to improve their physical and mental health, reduce isolation and to transition into independent community life.

Number of individuals supported	71
Number of new referrals	37

## Western Sydney Program

Our work in Western Sydney, one of Australia's most disadvantaged urban communities, focuses on building relationships and strengthening community capacity. We provide education and training in retail and hospitality across our social enterprises which serve as 'living classrooms'.

Our work in Mount Druitt, Holy Family Social Services, is operated in partnership with the Holy Family Parish.

Instances of assistance with affordable food and clothing at The Store	30,931
Participants in Family Holiday Program	850
Attendees at Holy Family Spring Festival	1,500approx
Participants in school mentoring program	36
Participants in retail training program	25
Participants in work experience programs	25
Participants in traineeships	5



### Central Australia Program

The focus of Jesuit Social Services' activity in Central Australia is to build relationships that foster a sense of personal and communal wellbeing and we strive to be welcoming, discerning and courageous in all that we do.

We seek to walk alongside local communities and service providers to build their capacity to deliver relevant support to treat local needs.

Through working in this way, Jesuit Social Services is: continuing its support of the Atyenhenge-atherre Corporation for the Eastern and Central Arrernte people; assisting the Santa Teresa Community in furthering the Communities for Children program; continuing involvement with the Alice Springs Youth Justice Network; supporting Tangentyere Council with the NT Government's 'youth boot camp' initiative; advising Atitjere Community and the Northern Land Council on infrastructure development; furthering the development of the Utyrre ('that which connects people in a shared identity') Archival Project for the Eastern and Central Arrernte people and assisting staff and program development of the Western Desert Nganampa Walytja Palyantaku Tjutaku in Kiwirrkurra Western Australia.

The focus of Jesuit Social Services' activity in Central Australia is to build relationships that foster a sense of personal and communal wellbeing.



# EDUCATION, TRAINING, AND EMPLOYMENT

## **Jesuit Community College**

Jesuit Community College is a Registered Training Organisation and Learn Local organisation providing people with real skills for life, learning and work. The College helps individuals and, by extension, their families and communities, to reach their full potential. Jesuit Community College draws on the rich tradition of Jesuit education which is committed to 'care of the whole person' and development of active and informed citizens.

The College offers nationally recognised qualifications in general education for adults, volunteering, visual arts and contemporary craft and creative industries, as well as short courses and pre-vocational programs. Training is government funded for eligible learners.

## **The Artful Dodgers Studios**

The Artful Dodgers Studios, a program of Jesuit Community College, provide innovative and creative spaces for young people to work in fully equipped art and music studios with experienced artists and musicians, explore and develop their creative skills and get involved in projects, exhibitions and public events.

The program is for young people aged 17 - 28 years experiencing marginalisation due to a range of risk factors including substance use, mental health problems, homelessness, involvement with the youth justice system, unemployment and any other problems that the young person identifies as causing disadvantage or social exclusion.

Students enrolled in pre-accredited training 189

Pre-accredited courses conducted 24

Students enrolled in accredited training\* 750

Accredited courses conducted\* 91

Students enrolled in non-accredited programs 28

Non-accredited programs conducted 3

*\* includes delivery by program partners*

## **Ignite social enterprise cafés**

Ignite Cafés are not-for-profit social enterprises that exist to support people who have faced difficulties with education, training and employment due to factors such as cultural and language barriers and long-term unemployment. The cafés provide participants with access to accredited hospitality training and work experience opportunities. Jesuit Social Services also works closely with a number of Job Services Australia providers to explore employment pathways for participants.





# JUST LEADERSHIP

Just Leadership is an initiative of Jesuit Social Services designed to develop the leadership capacity of individuals, organisations and communities in ways that contribute to building a more just and compassionate society.

The purpose of Just Leadership is to:

- foster the development of social leaders within and across business, government and community, nurturing and encouraging leaders to take action that will contribute to building a society that is more socially, environmentally and intergenerationally just
- build stronger connectivity between organisations and their people, developing work cultures and relationships that nurture both performance and meaning
- build stronger connectivity between organisations and their communities, through enterprising leadership strategies that enhance social innovation and inclusion
- be heard as an authentic voice, engaging and inspiring organisations, their people and the community in collaboration for a more just and compassionate world.

## Workplace Inclusion Program

The Workplace Inclusion Program is a professional training program for qualified African-Australians. The program operates as the African-Australian Inclusion Program in partnership with NAB, providing six months paid workplace experience. Eighty people have been placed in NAB since the program was piloted in 2009, and the program continues to grow in strength. In April 2012, in the seventh round, 26 participants across Melbourne and Sydney took roles in finance, technology and business administration.

In May 2012, at the Australian Human Resources Institutes' Diversity Awards, the African-Australian Inclusion Program was awarded the Cross Cultural Management Award, recognising the program as an 'outstanding initiative, reflecting a well thought through, high quality program'.

The Workplace Inclusion Program, a key just Leadership initiative, is dedicated to providing professionally qualified members of new and emerging communities with Australian experience in their chosen field. In doing so it provides a much needed opportunity for learning and achievement within a corporate environment; preparing participants so that they are more ready and able to access opportunities in the broader Australian employment market. Though the program is not designed to provide ongoing employment, our experience to date is that a high proportion of those who participate in the program go on to secure employment with many being retained by the host organisation in contract or permanent roles.

In 2012 Jesuit Social Services and NAB undertook an impact study to measure the social value created by participation in the AAIP. The analysis identified changes experienced by key stakeholders (program participants, their families, NAB teams involved) based on their involvement in the program. The findings quantified that for every dollar invested in the AAIP, these stakeholders received the equivalent of \$6.24 in social value. (Source: SROI analysis of the African Australian Inclusion Program (AAIP), National Australia Bank and Jesuit Social Services, January 2013.)

Eighty-six per cent of NAB participants\* went on to full time employment at the end of the program, either remaining with NAB or securing roles elsewhere. \*Cumulative employment total as at end of Round 8 (March 2013)



# FUNDRAISING

We rely on the generosity of our donors to support our current programs and to enable us to respond to new and emerging issues. We are very grateful for the people, workplaces, schools and groups who financially supported our work during 2012-2013.

## Newsletter Appeals / General Donations

Our newsletter appeals yield the most donations throughout the year and in 2012-2013 we gratefully received \$203,228 from donors. We also received \$134,583 in donations from other appeals.

## Community Partners

Jesuit Social Services' Community Partners are donors who commit to a monthly contribution via direct debit. This guaranteed source of income gives us the confidence to plan ahead, knowing we have the resources to see our plans through. Our Community Partners donated a generous \$70,165 this financial year.

## WorkPlace Giving

Like Community Partners, Workplace Giving donors commit to regular donations. These donations are made from their pre-tax salary via their employer. A total of \$3,749 was raised from Workplace Giving in 2012-2013.

## Bequests

Making a Will may be one of the most important things you'll do during your lifetime. It gives you an opportunity to safeguard the future of those you care about – your family, friends, communities and organisations like Jesuit Social Services. We go where hope is most needed and reach out to people on the edges of society.

The generosity of bequestors will allow Jesuit Social Services to keep responding to the unmet needs of disadvantaged young people, families and communities. Jesuit Social Services can use these funds to bring our programs to more people, to expand our work into new areas and to build the capacity of the organisation to continue its work.

## One Foot Raised Development Fund

The One Foot Raised Development Fund is a tax deductible fund to build Jesuit Social Services as a force for decades to come.

Contributions to the One Foot Raised Development Fund are an investment that will keep showing returns long into the future.

The One Foot Raised Development Fund:

1. builds our capacity to investigate, develop and launch new programs in response to unmet and emerging needs
2. strengthens our research, policy and advocacy work to change policies, practices, ideas and values that perpetuate inequality, prejudice and exclusion
3. gives us the freedom to discern where we can have the greatest impact and the independence to exercise leadership for social change.

Throughout 2012-2013, One Foot Raised donors contributed \$23,666 to the fund.

## Run Melbourne 2012

Nearly 90 people put on their runners to raise money for Jesuit Social Services at Run Melbourne on Sunday 15th July 2012. The combined Jesuit Social Services / NAB team also included staff and students from Loyola College. Together they enjoyed the sunny winter morning as they ran an impressive half marathon, 10km or walked / ran the 5km course. Thank you to everyone who hit the pavement to support our work and thank you, too, to everyone who sponsored their efforts - with an impressive total of over \$9,000 raised.



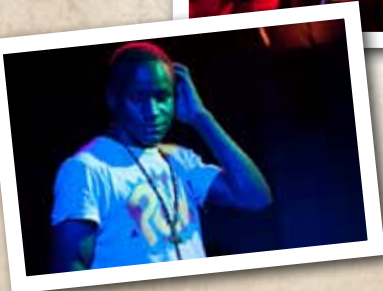


## Annual Dinner 2013

Over 400 people gathered for Jesuit Social Services' Annual Fundraising Dinner at the MCG on 23rd March 2013. The event offered an opportunity for supporters, partners and donors to come together to celebrate and raise funds for the organisation. Guests were treated to an entertaining Frank Costigan QC Address by actor and author, William McInnes. William reflected on the values instilled in him growing up and the value of community. Julie Edwards, CEO, spoke about the importance of opening up opportunities for people who had become disconnected from mainstream education, training and employment. Julie's speech was accompanied by a video presentation about the organisation's social enterprise programs. The evening included dancing and a live performance by musician Dave Arden. Thank you to our supporters who donated prizes for the Dinner.

## Just Music gig

What better way to spend a winter's afternoon than listening to some great live music with a bunch of friends for a good cause. That was the reason for the warm feeling at the Cornish Arms in Brunswick on Sunday 22nd July 2012 when a large crowd gathered to raise funds for our Brosnan Services program. The crowd was treated to great music from Angie Hart, Jesse and Ella Hooper, The Flybz, Peter Ewing, Kerri Simpson, Dave Arden and band and Etienne Dinanga. All of the musicians at the gig, who generously donated their time, also feature on the Just Music benefit album (available to purchase from [www.justmusic.org.au](http://www.justmusic.org.au)). A highlight of the afternoon was when Jesse Hooper was joined on stage by Casey, a participant at the Artful Dodgers Studios. They performed an original composition of Casey's, which they had also played on Melbourne's ABC radio in the week prior to the event.





# VOLUNTEERING

Generous spirited volunteers supported Jesuit Social Services in a range of ways during 2012-2013 including tutoring, mentoring, administration, event support and much more. Volunteers are a big part of our organisation and work with staff towards our vision of building a just society.

During 2012-2013, we had over 190 volunteers giving an estimated 9,220 hours of support to the organisation and the people with whom we work.

## Community Partnership with NAB

Our partnership with NAB means we are fortunate to receive regular volunteer support from staff. Volunteers from NAB are enthusiastic people with a 'can do' attitude.

During 2012-2013, NAB volunteers supported our work in the following ways:

- an energetic group of NAB volunteers assisted with the annual Brosnan Services program Christmas party where an energetic group of volunteers served a delicious lunch to over 80 participants, their families and staff
- NAB volunteers assisted in various activities at our Holy Family Social Services, Western Sydney program through the year and supported the annual community festival
- many of our NAB volunteers are involved in the African Visitation and Mentoring Program (AVAMP) as mentors to young African people in custody.

## Events

### Christmas lunch

A wonderful team of volunteers arranged, cooked and served a magnificent Christmas lunch at our Artful Dodgers Studios. They also fundraised for the event. The studio looked amazing as participants and staff joined in for a great lunch which, for many, was their only real Christmas meal.

### Annual Dinner

Our Annual Dinner was supported by a team of volunteers this year who helped us to source fundraising prizes. Particular thanks go to Sue D'Amico.

### 'Reunite to Ignite' Dinner

The 'Reunite to Ignite' dinner at St Ignatius College, Riverview, Sydney was coordinated by a well organised and energetic group of volunteers. The women managed everything from promotion through to set up and catering. Congratulations to all for a wonderfully successful evening.

## Jesuit Volunteers Australia

Members of Jesuit Volunteers Australia are engaged in Jesuit Social Services and / or other agencies which support marginalised people in our community. Volunteers are offered opportunities for reflection and the deepening of their commitment to social justice. Jesuit Volunteers Australia also offers reflection resources for volunteers and staff in the broader community services sector.

The involvement of volunteers has greatly enriched the service we provide to people bereaved by suicide.



## Program highlights

### Support After Suicide

Support After Suicide has 41 active volunteers, most of whom are bereaved by suicide themselves. Their involvement has enabled us to provide a range of ways for people bereaved by suicide to meet with others and to support each other.

Some key roles for volunteers are as guest speakers, hosts of the monthly Peer Support Morning Coffee get-togethers, assisting with the children's program 'Serious Fun', planning a young people's music workshop, and a range of other groups and activities. In addition, five trained bereavement counsellors have expanded the service by providing pro bono counselling for 35 participants.

The involvement of volunteers has greatly enriched the service we provide to people bereaved by suicide.

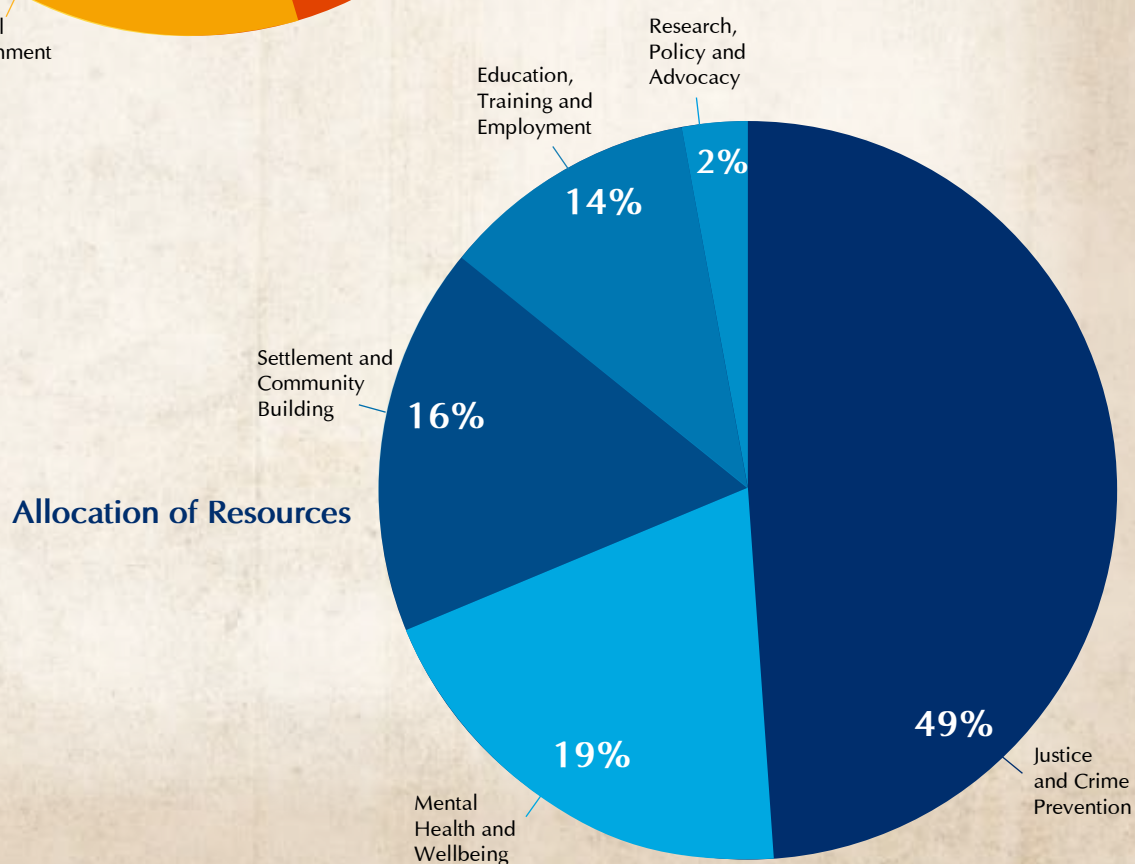
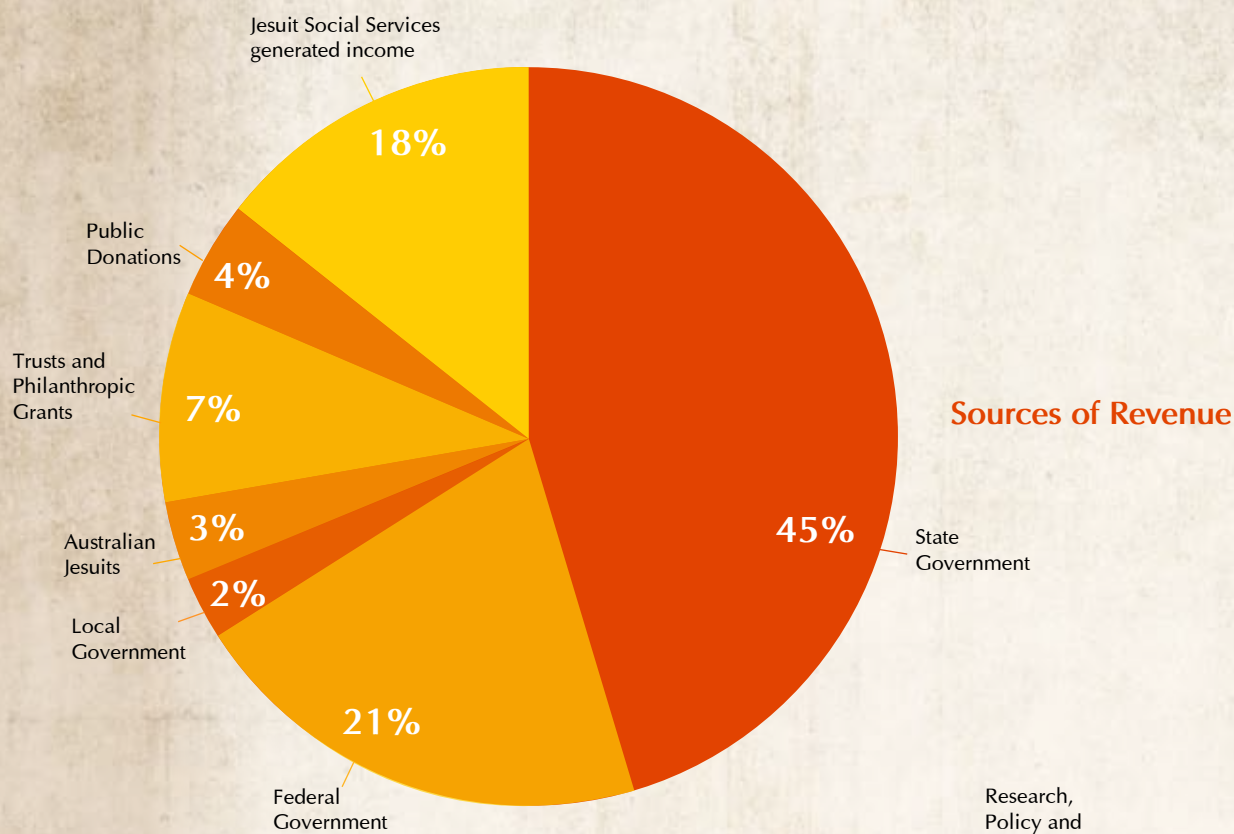
### Bicycles for Community Detention participants

Community Detention staff identified the need for bikes to be used by participants who did not have access to other forms of transportation. Volunteers and generous donors pooled their efforts to donate, repair and deliver bikes, helmets and bike locks to over 20 participants. The participants were very grateful and excited when the bikes arrived. This initiative is a great example of our community working together to turn a small idea into reality and make a big difference to others.





# FINANCIAL SUMMARY





# FUNDERS AND SUPPORTERS

## Government and Foundation Funders and Supporters

ANZ Trustees  
Attorney-General's Department  
Australia Council for The Arts  
Australian Jesuit Province  
Besen Family Foundation  
Beswick Family Fund  
Blackmore Foundation  
Blacktown City Council  
Cabrini Health Limited  
Caritas Australia  
Caroline Chisholm Centre for Social Justice  
Catholic Church Insurances Limited  
Catholic Social Services Australia  
Construction Fit out Manufacturing Electrical Union  
City of Boroondara  
City of Melbourne  
City of Yarra  
Crown Castle Australia Pty Ltd  
Department of Education and Early Childhood Development (Victoria)  
Department of Education, Employment and Workplace Relations (Federal)  
Department of Family and Community Services (New South Wales)  
Department of Health (Victoria)  
Department of Health and Ageing (Federal)  
Department of Human Services (Victoria)  
Department of Immigration and Citizenship (Federal)  
Department of Justice (Victoria)  
Department of Attorney General and Justice (New South Wales)  
Holy Family Parish Mount Druitt  
Hyundai Motor Company Australia Pty Ltd  
Macquarie Group Foundation  
Michael and Andrew Buxton Foundation  
Nossal Family Trust  
National Australia Bank  
Orygen Youth Health Research Centre  
Parks Victoria  
Song Room  
The Bernard and Mary Euhus Charitable Trust  
The Lochtenberg Foundation  
The Mary Carmel Condon Charitable Trust  
The Norman, Mavis and Graeme Waters Perpetual Charitable Trust  
The O'Brien Family Foundation  
Victorian Skills Commission

## One Foot Raised Development Fund Supporters

Michael Green  
Miss Dora O'Sullivan and Mrs Rita Andre  
Simpson Family Foundation

## Fundraising Event Supporters / Corporate Partners

2XU  
3AW  
Amelia Farrugia

Ange Flannery  
Angela Marino  
Anne Masi  
Auburn Beauty  
Best Western Kew  
Bethany Sutton  
Bill Gurry  
Bob Stewart  
Bruce Woodley  
Cam Matthews  
Chapter One Boutique  
Charlie Forte  
Church Resources  
Church St Enoteca  
Clayton Utz  
Clinton Murray Architects  
Corporate Fit-out Solutions  
Cosi and Josephine Melone  
Dean Coleman  
Direct Digital Group  
Dr John Funder  
Edward Beale  
Eli and Mark LoGiudice  
Essence of a Woman  
Estela  
Fil Impala  
Fitness Dimensions of Kew  
Flavour Beauty Therapists  
Francis Di Riz  
Fuji Xerox  
Gary Rothville and Associates  
Greater Western Sydney Football Club  
Harris Farm  
Harvey Norman  
HDC Salon  
Hope Estate  
Itconnexion  
Jacqui Bendall  
James and Jacqui Bonnet  
Jo Manion  
Jo and Steve Silvagni  
Jo-Ann Smith  
Katrina Ketsakidis  
KAO Brands  
Kerry Smith  
KPMG  
Kristy Plumeridge  
Leonie Piper  
Liz Salter  
Louise Bisby  
Lou Cahill  
Maria Benedetti  
Marie Mangan  
MCG  
Medibank IceHouse  
Melbourne Racing Club  
Michael and Suzanne Daniel  
Minter Ellison  
Natalie Amoroso  
Nissan Motor Co.  
Patricia Quigley  
PAR Leasing  
PFD Foods  
Peninsula Support Group  
Piccoli Portraits

Dr Rachel Knight  
Restore Physiotherapy  
Richard Simpson  
Rob Kirwan  
Roland Perry  
Royal Mail Hotel  
Selleys Yates Dulux Group  
Sevenhill Cellars  
Silverstone Volvo Doncaster  
Spray Tan Balwyn  
St Ignatius College, Riverview  
Sue D'Amico  
SuperSprint  
Surrey Travel  
Susan and Patrick Houlihan  
Sydney Swans Football Club  
The Arts Centre  
The Boulevard Restaurant  
The Ripples Group  
The Wiggles  
Wilson & Bradley  
Xavier College  
Xavier College Fathers Association  
Zucca Rossa



# CONTACT DETAILS

## **Jesuit Social Services Central Office**

326 Church Street (PO Box 271)  
Richmond Vic 3121  
Tel: (03) 9421 7600  
Fax: (03) 9421 7699  
Email: [jss@jss.org.au](mailto:jss@jss.org.au)  
Web: [www.jss.org.au](http://www.jss.org.au)

## **JUSTICE AND CRIME PREVENTION**

### **Brosnan Services - North West**

10 Dawson Street (PO Box 284)  
Brunswick Vic 3056  
Tel: (03) 9387 1233  
Fax: (03) 9387 1178  
Email: [brosnan@jss.org.au](mailto:brosnan@jss.org.au)

### **Brosnan Services - East**

Level 1, 16-18 Ellingworth Pde  
Box Hill Vic 3128  
Tel: (03) 9899 0736  
Fax: (03) 9898 3506

### **Brosnan Services - South**

155 Lonsdale Street Dandenong Vic 3175  
(PO Box 393 Dandenong Plaza 3175)  
Tel: (03) 9791 6596  
Fax: (03) 9791 6524

### **Community Justice Group Conferencing**

10 Dawson Street (PO Box 284)  
Brunswick Vic 3056  
Tel: (03) 9387 1233  
Fax: (03) 9387 1178  
Email: [communityjustice@jss.org.au](mailto:communityjustice@jss.org.au)

## **MENTAL HEALTH AND WELLBEING**

### **Connexions**

1 Langridge Street (PO Box 1141)  
Collingwood Vic 3066  
Tel: (03) 9415 8700  
Fax: (03) 9415 7733  
Email: [connexions@jss.org.au](mailto:connexions@jss.org.au)

### **The Outdoor Experience**

Bush Hut (Mel Ref 2D, F10) 110 Studley Park Road  
Kew Vic 3101  
Tel: (03) 9855 2633 Fax: (03) 9855 1425  
Email: [toe@jss.org.au](mailto:toe@jss.org.au)  
Web: [www.toe.org.au](http://www.toe.org.au)

### **Support After Suicide**

326 Church Street (PO Box 271)  
Richmond Vic 3121  
Tel: (03) 9421 7640  
Fax: (03) 9421 7698  
Email: [aftersuicide@jss.org.au](mailto:aftersuicide@jss.org.au)  
Web: [www.supportaftersuicide.org.au](http://www.supportaftersuicide.org.au)



## SETTLEMENT AND COMMUNITY BUILDING

### **Vietnamese Welfare Resource Centre**

Ground Floor 58 Holland Court  
Flemington Vic 3031  
Tel: (03) 9376 2033  
Fax: (03) 9376 4687  
Email: [vwrc@jss.org.au](mailto:vwrc@jss.org.au)

### **African Program**

Ground Floor 120 Racecourse Rd (PO Box 55)  
Flemington Vic 3031  
Tel: (03) 9376 5747  
Fax: (03) 9376 9575  
Email: [african@jss.org.au](mailto:african@jss.org.au)

### **Community Detention Programs**

PO Box 206  
Epping Vic 3076  
Tel: (03) 8401 4548  
Fax: (03) 8401 4915  
Email: [communitydetentionprograms@jss.org.au](mailto:communitydetentionprograms@jss.org.au)

### **Western Sydney Program**

Emert Parade, Emerton NSW 2770  
(PO Box 86 Mt Druitt NSW 2770)  
Tel: (02) 9628 2288  
Fax: (02) 9628 0593  
Email: [westernsydney@jss.org.au](mailto:westernsydney@jss.org.au)

### **Central Australia Program**

Shop 4/72 Todd Street  
Alice Springs NT 0871  
Email: [centralaustralia@jss.org.au](mailto:centralaustralia@jss.org.au)

### **Jesuit Social Services, Collingwood**

1 Langridge Street (PO Box 1141)  
Collingwood Vic 3066  
Tel: (03) 9415 8700  
Fax: (03) 9415 7733

### **Learning & Practice Development Unit**

326 Church Street (PO Box 271)  
Richmond Vic 3121  
Tel: (03) 9421 7600  
Fax: (03) 9421 7699  
Email: [staff.training@jss.org.au](mailto:staff.training@jss.org.au)

## EDUCATION, TRAINING AND EMPLOYMENT

### **Jesuit Community College**

1 Langridge Street (PO Box 1141)  
Collingwood Vic 3066  
Tel: (03) 9415 8700  
Fax: (03) 9415 7733  
Email: [training@jss.org.au](mailto:training@jss.org.au)  
Web: [www.jesuitcommunitycollege.org.au](http://www.jesuitcommunitycollege.org.au)

### **Ignite Cafes - Melbourne**

Hawthorn Community Precinct  
584-586 Glenferrie Road  
Hawthorn Vic  
Tel: (03) 9818 3796

Camberwell Library and Office Precinct  
340 Camberwell Road  
Camberwell Vic  
Tel: (03) 9882 6271

### **Artful Dodgers Studios**

1 Langridge Street (PO Box 1141)  
Collingwood Vic 3066  
Tel: (03) 9415 8700  
Fax: (03) 9415 7733  
Email: [collingwood@jss.org.au](mailto:collingwood@jss.org.au)  
Web: [www.artfuldodgers.tv](http://www.artfuldodgers.tv)

### **Just Leadership**

326 Church Street (PO Box 271)  
Richmond Vic 3121  
Tel: (03) 9421 7600  
Fax: (03) 9421 7699  
Email: [justleadership@jss.org.au](mailto:justleadership@jss.org.au)  
Web: [www.justleadership.org.au](http://www.justleadership.org.au)













JESUIT  
SOCIAL  
SERVICES

BUILDING A JUST SOCIETY

[www.jss.org.au](http://www.jss.org.au)