



Climate resilience workshop series for local organisations

This workshop series supports local climate resilience by strengthening capacity and networks across local government, community service organisations, community health organisations, and emergency management.

Jesuit Social Services' Centre for Just Places unlocks the relationship between social, environmental and economic justice. A central pillar of our work is focused on building the enabling conditions to act on climate change adaptation and resilience in ways that centre equity and justice.

What we know

Extreme weather events, including heat, floods, storms and bushfires, are already being felt by communities and ecosystems across Australia. It is important to recognise the diversity of experiences of climate change within and across communities.

Community service and community health organisations, together with local government, can play a critical role in local climate change adaptation and resilience planning. Collaboration across these local organisations can facilitate the types of place-based responses to climate change impacts we know are needed.

Local community service and community health organisations often:

- Work on the frontline supporting people during extreme weather events,
- Play a vital role in strengthening long-term community resilience, and
- Have trusted relationships with and a deep localised knowledge of who is most at-risk to climate change and why.

However, community service and community health organisations are themselves vulnerable to climate impacts, placing the communities they support at even greater risk.

By working collaboratively, across and within sectors and organisations, we can:

- Build an understanding of how determinants of health and wellbeing influence local climate change vulnerability,
- Plan and adapt services and infrastructure to meet the needs of individuals and communities,
- Ensure diversity of participation in health and wellbeing and adaptation planning, and
- Strengthen capacity for organisations and communities to support each other in times of crisis and enable locally-led responses for long-term resilience.

What we offer

Over two half-day workshops, we partner with a lead organisation (such as a local government authority) to bring together representatives from across local government, community services, community health organisations and emergency management. The workshops are intended to strengthen cross-sector relationships required to prepare and respond to the impacts of climate change, and develop a shared understanding of:

- The localised drivers of climate vulnerability,
- The roles and responsibilities of local governments, community service and community health organisations, and emergency planners, and
- The strengths, needs and opportunities of local organisations, with support from local government, to design and implement place-based approaches to strengthening climate change resilience in their community.

The Workshops

Workshop 1. Introduction to climate change adaptation and resilience

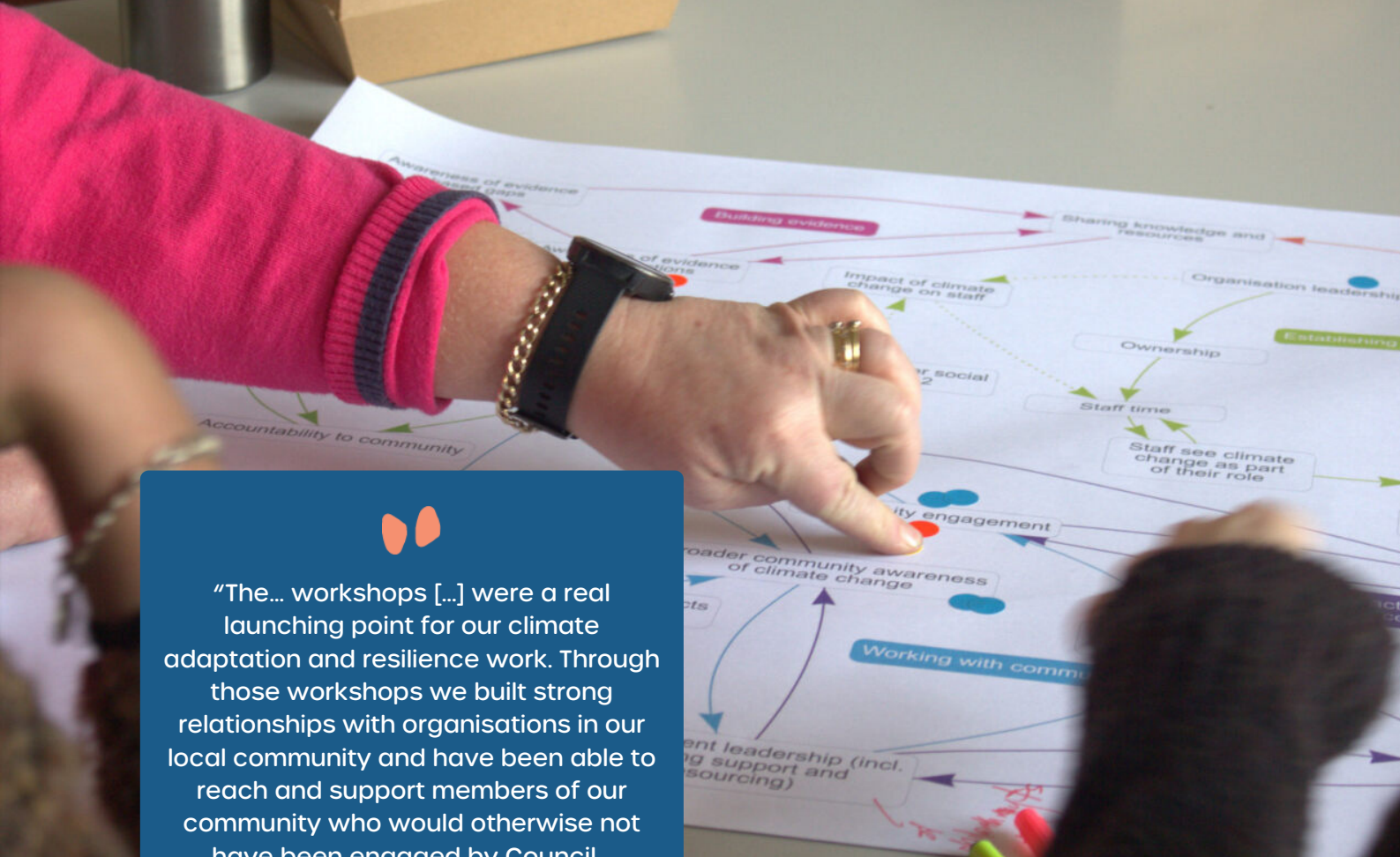
- Overview of climate change impacts and the role of community services, community health organisations and local government,
- Overview of responses for strengthening resilience across climate change adaptation, mitigation and transformation, and
- A scenario exercise (e.g. multi-day heatwave and power outage) to consider what we know about local climate change vulnerability.

Workshop 2. Strengthening climate resilience - discussion and application

- A scenario exercise to reflect on organisational responses and challenges,
- Where to from here to support our community, and
- Guidance on access to resources, research, tools and narrative building.

Workshop 3. Collaborative action planning (optional)

- An optional third workshop to facilitate the development of priority actions and agree on an ongoing collaborative approach amongst participating organisations.



“The... workshops [...] were a real launching point for our climate adaptation and resilience work. Through those workshops we built strong relationships with organisations in our local community and have been able to reach and support members of our community who would otherwise not have been engaged by Council... We found the team extremely rigorous, thoughtful, committed and easy to work with and would highly recommend their work to other councils.”

– Darebin City Council

**Want more information?
Contact us to set up a no-obligation conversation.**

Jesuit Social Services' Centre for Just Places
0429 268 904
just.places@jss.org.au

For information on Jesuit Social Services and the Centre for Just Places, visit <http://justplaces.org.au>

